



Installing Cisco StadiumVision Director for the First Time

First Published: March 20, 2015

This module describes how to install the Cisco StadiumVision Director Release software on your newly-purchased Platform 3 server hardware from a full ISO image, as well as the requirements for installing Cisco StadiumVision Director on a VM (virtual machine).



Caution

New Platform 3 servers come preinstalled with a preliminary image of Cisco StadiumVision Director that is not intended for production operation. You must install the Cisco StadiumVision Director Release software from a *full ISO* image (not an upgrade) that you downloaded from Cisco.com to be sure that you are running the released production version of Cisco StadiumVision Director.

This module includes the following topics:

- [Prerequisites, page 7](#)
- [Installation Tasks, page 9](#)
- [What To Do Next, page 17](#)

Prerequisites



Caution

Do not alter the RAID configuration prior to installation.

Refer to the [Release Notes for Cisco StadiumVision Director Release 4.0](#) for the latest information about hardware and software requirements, changes, important notes, and caveats for your software release.

Be sure that the following requirements are met before you upgrade your server:

Platform 3 Servers

- Your new server is installed in its production location. For more information about installing your Platform 3 hardware, see the [Cisco UCS C220 Server Installation and Service Guide](#).
- You have completed the initial server setup and configured the Cisco UCS C-Series Integrated Management Controller (CIMC) interface.

To configure the CIMC, you will need an additional IP address for the server and should be prepared to change the default login and password. Be sure that the server is configured for standalone mode with the following settings:

- DHCP—Disabled
- NIC redundancy—None
- Boot order—Virtual CD/DVD, HDD

For more information, see the [“Appendix C: CIMC Configuration and Firmware Upgrade Guidelines on the Cisco UCS C220 Server”](#) module on page 57.

- You have the network information required to configure the Ethernet connection on the Cisco StadiumVision Director server, such as:
 - IP address (IPv4 only) and network mask



Note The Cisco StadiumVision Director server should be configured with a static IP address or a non-expiring DHCP lease.

- Default gateway address
- DNS server address
- Hostname
- The Cisco StadiumVision Director server is connected to the network and has power.
- Power on the server and verify the boot order in the BIOS (by pressing **F2** while booting) prior to installation.
- To access the Cisco Integrated Management Controller (CIMC) for the software installation, the following requirements are met:
 - Your computer meets the minimum browser and Flash player requirements for Cisco StadiumVision Director, and also has Java 1.6 or later installed.
 - You have a laptop connection with access to the Cisco StadiumVision Director server network.
 - You have the IP address of the CIMC interface on the Cisco StadiumVision Director server.
 - You have the CIMC interface login credential. The default credential is **admin** and **password**.

Virtualized Server Environment

Installing Cisco StadiumVision Director in a virtualized server environment includes setting up your server environment, running the full ISO for Cisco StadiumVision Director, and configuring the network. For more information see the [“Hardware Prerequisites”](#) section on page 2 and [“Installing on a Virtual Server for the First Time”](#) section on page 3 in the [“Getting Started Installing or Upgrading Cisco StadiumVision Director”](#) module on page 1.

Installation Tasks


Note

This section includes the tasks to install Cisco StadiumVision Director for the first time on a Platform 3 server.

To install Cisco StadiumVision Director for the first time on a Platform 3 server, complete the following tasks:

- [Downloading the ISO Files from Cisco.com, page 9](#) (required)
- [Logging Into the CIMC Interface, page 10](#) (required)
- [Verifying the Minimum CIMC Firmware Version for Cisco StadiumVision Director, page 11](#) (required)
- [Launching the KVM Console, page 12](#) (required)
- [Mapping the Cisco StadiumVision Director ISO Image, page 13](#) (required)
- [Installing the Cisco StadiumVision Director ISO Image, page 14](#) (required)
- [Configuring the Network Setup, page 14](#) (required)

Downloading the ISO Files from Cisco.com

You are eligible to obtain information about how to access the Cisco StadiumVision Director full ISO file after you have purchased the proper licensing. Contact Cisco Technical Support for information about how to download the ISO file ([Table 1](#)).


Note

Be sure that you choose the ISO for SV-DIRECTOR and *not* for SVD-REMOTE.

[Table 1](#) shows the filename conventions used for full ISO images for the Cisco StadiumVision Director server.

Table 1 *ISO Filename Conventions*

Hardware Product ID	Filename Convention ¹
SV-PLATFORM3=	<ul style="list-style-type: none"> • SV-DIRECTOR-FULL-4.0.0-<i>nnn</i>.x86_64.iso • SV-DIRECTOR-FULL-4.0.0-<i>nnn</i>.x86_64.iso.md5sum

1.“*nnn*” represents the build number of the image in the file.

Be sure to download the ISO files to a location where you can access them once logged into the CIMC interface.

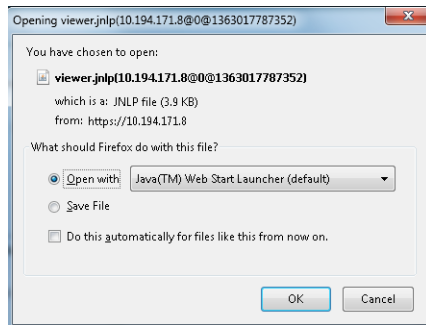
To verify the integrity of your upgrade file from the download, you can use a command-line or GUI utility on your laptop to calculate the checksum on the .iso file. Open the .md5sum file to compare the value that you calculated with the expected value provided in the .md5sum file. The values should match. If they do not, retry the download.

Logging Into the CIMC Interface

To log into the CIMC interface, complete the following steps:

- Step 1** From a laptop connection with access to the Cisco StadiumVision Director server network, open a browser window and type the IP address of the CIMC interface as shown in the following example:
- ```
https://ip-address
```
- Step 2** If prompted, click **OK** to open the Java viewer.jnlp as shown in [Figure 1](#):

**Figure 1** Opening viewer.jnlp File



- Step 3** If a security dialog box displays, do the following:
- (Optional) Select the checkbox to accept all content from Cisco.
  - Click **Yes** to accept the certificate and continue.
  - Confirm any additional security certificate exceptions.
- Step 4** At the CIMC login screen, note the firmware version displayed ([Figure 2](#)).



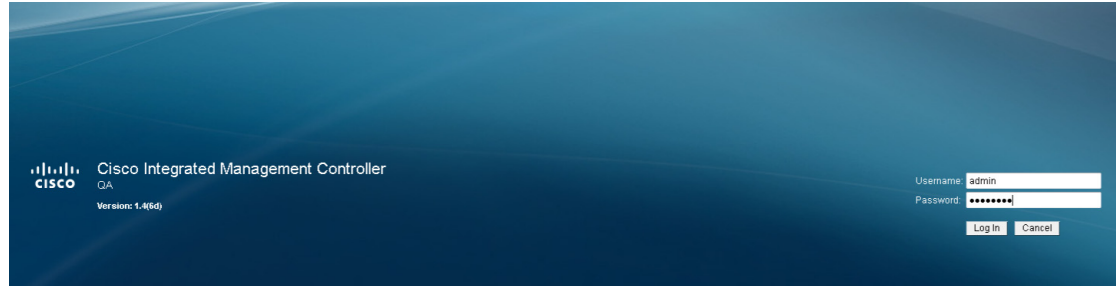
**Tip** The firmware version is also displayed in the Cisco Integrated Management Controller (CIMC) Information box on the CIMC console after you log in.

- Step 5** From the CIMC login screen, type the username and password for the CIMC interface.



**Tip** The default credential is **admin** and **password**. If changed during server setup, use the password that you configured.

Figure 2 CIMC Login Screen



**Step 6** Click **Log In**.

## Verifying the Minimum CIMC Firmware Version for Cisco StadiumVision Director

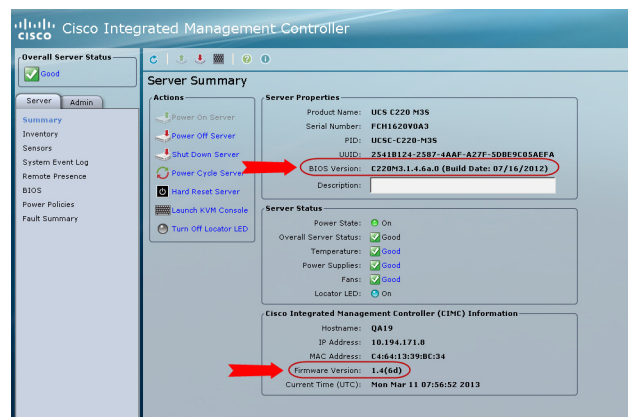
Before you begin, see the “Cisco StadiumVision Director Server Support” section of the [Release Notes for Cisco StadiumVision Director Release 4.0](#) to find the CIMC/BIOS versions tested for the Platform 3 server.

To verify the minimum CIMC firmware version for Cisco StadiumVision Director, complete the following steps:

**Step 1** Be sure that the CIMC firmware version found on the CIMC login screen or in the CIMC console is at the minimum tested version (or later) for the Cisco StadiumVision Director release.

[Figure 3](#) shows where the firmware version is displayed on the CIMC console for both the BIOS and CIMC firmware.

Figure 3 Firmware Version Verification From the CIMC Console



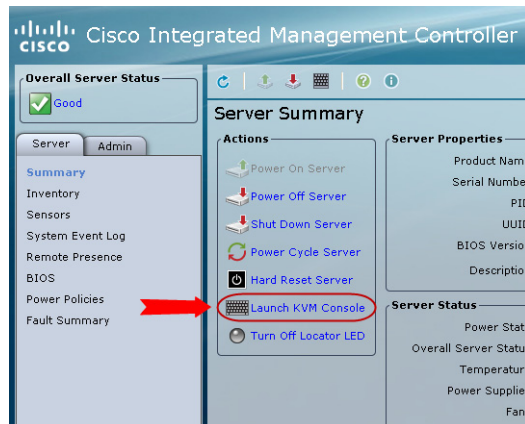
**Step 2** If necessary to upgrade the CIMC/BIOS firmware on the Platform 3 server, refer to “[Appendix C: CIMC Configuration and Firmware Upgrade Guidelines on the Cisco UCS C220 Server](#)” module on page 57.

## Launching the KVM Console

To launch the KVM console, complete the following steps:

- Step 1** From the CIMC console Actions box, click **Launch KVM Console**.

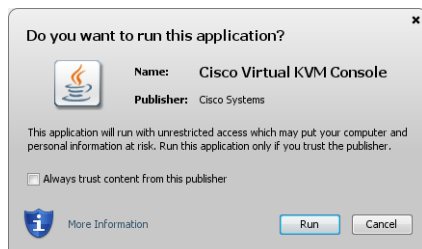
**Figure 4** Launch KVM Console



**Tip** You can also click the keyboard in the icon bar at the top of the console to launch the KVM console.

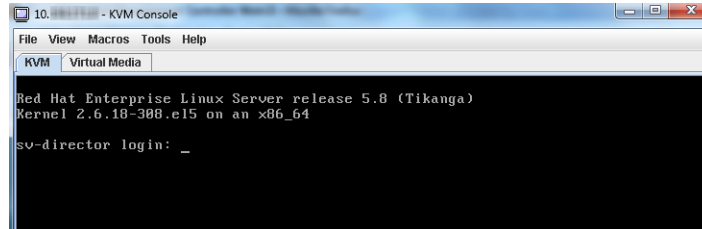
- Step 2** If a security dialog box displays, do the following:
- (Optional) Select the checkbox to accept all content from Cisco.
  - Click **Yes** to accept the certificate and continue.
- Step 3** At the Cisco KVM Virtual Console confirmation box (Figure 5), do the following:
- (Optional) Select the checkbox to accept all content from Cisco.
  - Click **Run**.

**Figure 5** Cisco Virtual KVM Console Confirmation



- Confirm any additional security certificate exceptions.

- Step 4** The KVM Console window is displayed with a login prompt. Do not log in (Figure 6).

**Figure 6** Cisco KVM Virtual Console Login Screen

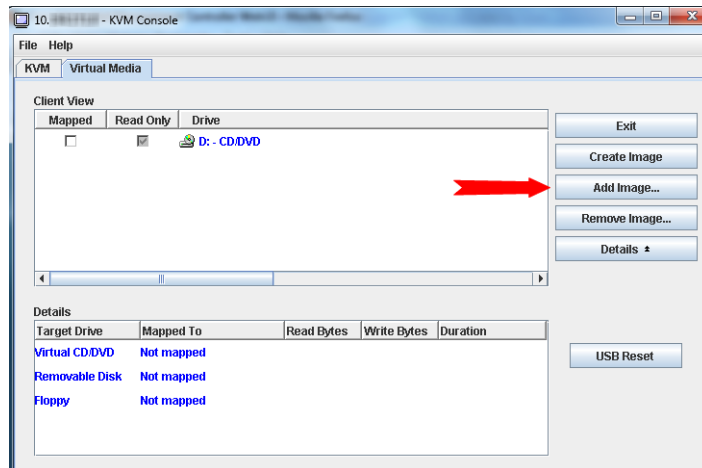
## Mapping the Cisco StadiumVision Director ISO Image

**Note**

This step requires that you have downloaded the Cisco StadiumVision Director full ISO image file for the Platform 3 server from Cisco.com and it is accessible from the computer that you are using to log into the CIMC interface.

To map the Cisco StadiumVision Director ISO image, complete the following steps:

- Step 1** From the KVM console window, click the **Virtual Media** tab.
- Step 2** From the Virtual Media screen, click **Add Image** (Figure 7).

**Figure 7** Virtual Media Screen

- Step 3** Navigate to the location of the ISO file that you downloaded and click **Open**.

**Note**

CIMC can experience slow performance. If slow performance occurs, clear the browser cache.

- Step 4** In the Client View box, mark the checkbox under the Mapped column to select the ISO source.
- Step 5** Confirm that the Virtual CD/DVD has been added under the Virtual Media tab, Virtual CD/DVD.

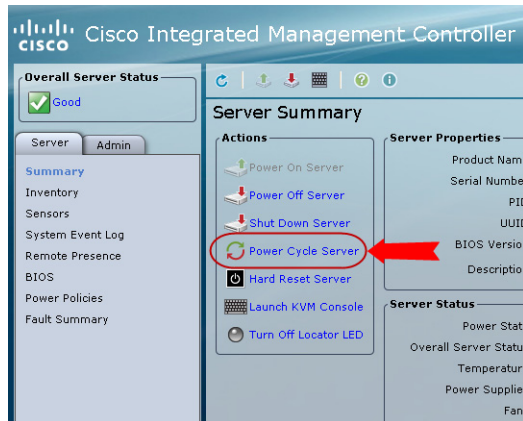
- Step 6** In the Details box, double-click on Virtual CD/DVD, and observe the read bytes counter increasing (refreshes read bytes).
- Step 7** Click the KVM tab and minimize the window but do not exit.

## Installing the Cisco StadiumVision Director ISO Image

To install the Cisco StadiumVision Director ISO image, complete the following steps:

- Step 1** In the Actions box on the CIMC console, click Power Cycle Server (Figure 8).

**Figure 8** Power Cycle Server From the CIMC Console



- Step 2** At the confirmation prompt, click **OK**.
- Step 3** From the KVM console, observe the start of the installation process.

## Configuring the Network Setup

To configure the network setup, complete the following steps:

- Step 1** When the Linux Setup Agent window appears in the KVM console, select **Network Configuration** and press **Enter**.



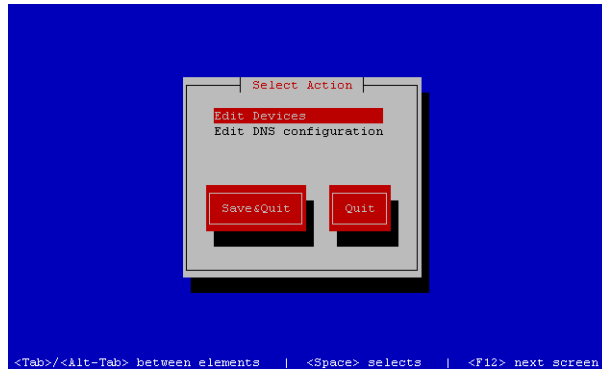
### Tip

The Linux Setup Agent window will be available for 60 minutes before closing. If you miss responding to the network setup as part of the ISO installation, you can go to the TUI **Main Menu > System Settings > Network Settings** to complete the same network configuration. However, you will also need to manually edit the hosts file, selected from the Network Settings submenu.



**Step 2** In the Select Action screen (Figure 9), select **Edit Devices** and press **Enter**.

**Figure 9** *Select Action Screen*

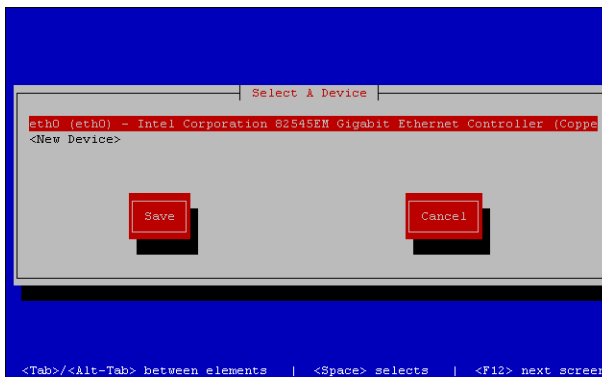


**Tip**

If you notice what appears to be stray characters in the Linux interface, verify that your SSH client is using the UTF-8 character set translation.

**Step 3** In the Select a Device screen (Figure 10), select **eth0** and press **Enter**.

**Figure 10** *Select a Device Screen*



The Ethernet Configuration screen is displayed.

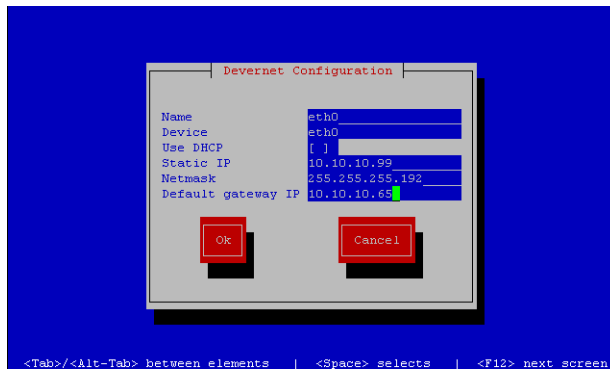


**Note**

The Linux screen is mislabeled “Devernet Configuration.”

**Step 4** In the Ethernet Configuration screen (Figure 11), do the following:

**Figure 11** *Devernet Configuration Screen*



- a. Press the Tab key until the cursor is positioned on the Static IP address line.
- b. Press the backspace key to go to the beginning of the line and type in the IPv4 address of the Cisco StadiumVision Director Server.



**Note** This should be a different IP address than what you configured for the CIMC interface.

- c. Press the tab key to go to the Netmask line. Type the network mask for the IPv4 address.
- d. (Optional) In the Default gateway IP line, type the address of the default gateway of your network.

**Step 5** When configuration of all options is complete, press the Tab key until the **Ok** button is selected and press **Enter**.

You return to the Select a Device screen.

**Step 6** Press the Tab key until the **Save** button is highlighted and press **Enter**.

You return to the Select Action screen.

**Step 7** Press the down arrow key to select the **Edit DNS configuration** option and press **Enter**.

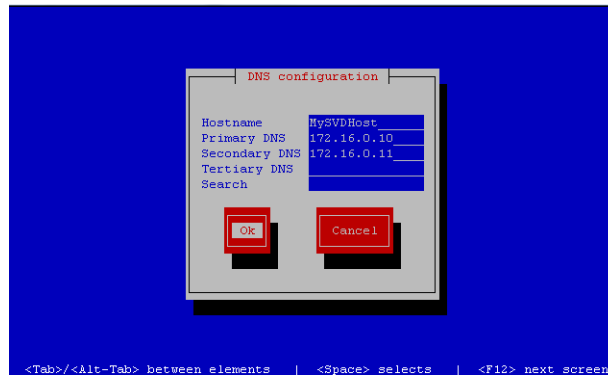
The DNS configuration screen is displayed.

**Step 8** In the DNS configuration screen (Figure 12), select and configure the Hostname and one or more DNS Server IP addresses.



**Note** Do not use hostnames that contain periods “.” within the name.

Figure 12 DNS Configuration Screen



**Step 9** Press the Tab key until the **Ok** button is selected and press **Enter**.

You return to the Select Action screen.

**Step 10** In the Select Action screen, press the Tab key until the **Save&Quit** button is selected and press **Enter**.

## What To Do Next

After you have installed the Cisco StadiumVision Director software, do the following:



### Note

For initial deployments of the SV-4K media player, be sure to follow the instructions in the [Cisco StadiumVision SV-4K Media Player Deployment Guide](#).

- Upgrade the Cisco DMP 4310G firmware (as required).  
See “Upgrading the DMP 4310G Firmware” module on page 39.
- Upgrade the SV-4K firmware (required).  
See “Upgrading the SV-4K Firmware” module on page 43.
- Go to the “Configuring Cisco StadiumVision Director Server System Settings” module of the [Cisco StadiumVision Director Server Administration Guide](#) to complete initial setup of the server, and do the following:
  - Configure NTP on Cisco StadiumVision Servers and DMPs.
  - Configure NTP and PTP for the SV-4K media players.



### Note

By default, the Cisco DMP 4310G and SV-4K media players use the Cisco StadiumVision Director server as the NTP source. When using PTP on the SV-4K, only the PTP master SV-4K device references an NTP source. If you want to change the NTP source used by the SV-4K, then you need to change the SV-4K global settings.

- Configure multicast ports for Cisco StadiumVision Director.

