

Verify Expressways Files with Vi Editor

Contents

[Introduction](#)

[Prerequisites](#)

[Requirements](#)

[Components Used](#)

[Basic Linux Commands](#)

[Vi Editor Basics](#)

[How to Use Vi Editor](#)

[Access a File](#)

[How to Save a File with Vi Editor](#)

[WinSCP Basics](#)

[How to Use WinSCP Text Editor](#)

[Verify](#)

[How to Check Changes on Files](#)

[Additional Resources](#)

Introduction

This document describes the steps to access and edit a file with VI Editor on Expressways and another alternative with WinSCP software.

Prerequisites

Requirements

- Basic knowledge on Expressway.
- Expressway default configuration.
- WinSCP installed on PC.

Components Used

- Expressway-C server on version X14.0.3.
- Windows 10 PC.

The information in this document was created from the devices in a specific lab environment. All of the devices used in this document started with a cleared (default) configuration. If your network is live, ensure that you understand the potential impact of any command.

Basic Linux Commands

You can run commands to perform various tasks, from package installation, to user management, and file manipulation.

pwd command: Use the `pwd` command to find the path of your current directory.

cd command: To navigate through the Linux files and directories, use the `cd` command.

ls command: The `ls` command lists files and directories within a system. Run it without a flag or parameter to show the current directory content.

cat command: It lists, combines, and writes file content to the standard output. To run the `cat` command, type `cat`, followed by the file name and its extension.

There are several commands available, but they are out of the scope of this document.

Vi Editor Basics

The `Vi` Editor tool is an interactive tool as it displays changes made in the file on the screen while you edit the file. In `Vi` Editor, you can insert, edit, or remove a word as the cursor moves throughout the file.

The `Vi` Editor has two modes:

- **Command Mode:** In Command Mode, actions are taken on the file. The `Vi` Editor starts in Command Mode. Here, the typed words act as commands in `Vi` Editor. To pass a command, you need to be in Command Mode.
- **Insert Mode:** In Insert Mode, it is possible to insert text into the file. The **Esc** key takes you to the Command Mode from the Insert Mode.

By default, the `Vi` Editor starts in Command Mode. To enter text, you need to be in **Insert Mode**, just type the letter **i** to change to the Insert Mode.

How to Use Vi Editor

In order to open a file with `Vi` Editor, you must know the directory path first. For the purpose of this article, a file named `test-vi` is created, the path is `/tandberg/etc`. Please see the image, with the steps to find the path and move to a specific directory. Make sure to access the Expressway by Secure Shell (SSH), and use the **root** account.

```

10.15.13.15 - PuTTY
~ #
~ # ls
bramble etc licensemanager lost+found portforward trafficserver
crash images locale oauthlocal provisioning upgrade
docker ivy log persistent tbl web
~ #
~ # cd etc
~/etc # ls
access.conf.d nsswitch.conf
addn-hosts openldap
collectd openssl
collectd.conf opt
collectd.conf.bak pam.d
config.oldversioninfo passwd
console_gids passwd.d
consoleinactivitytimeout.conf postinstall
crashreportd.conf postinstall-crossgrade.d
currenttimezone postinstall.current-crossgrade.d
date_time_zonespec.csv postinstall.current.d
default postinstall.d
dnsmasq.conf postinstall-scripts.d
dnsmasq.conf.d role_mapping
dnsmasq-resolv.conf securetty
group shadow
hardware_types.xml smb-ldap.conf
http_dynamic_ssl.conf systemunit.xml
hwconfig systemup-timestamp
login.defs templates
logrotate.d test-vi
monit ttlog.conf
mountcount zoneinfo
mountcount.last
~/etc #
~/etc # pwd
~/etc # cd /andberg/etc
~/etc #

```

ls command used to list files in current location

cd command used to move to etc directory

ls command used to list files in new directory

test-vi is the file name

pwd command used to know the path

pwd command output

Access a File

Once you navigate to the correct directory, run the command **vi <file-name>** to open it. By default Vi Editor is in the Command Mode:

```

10.15.13.15 - PuTTY
~/etc #
~/etc # vi test-vi

```

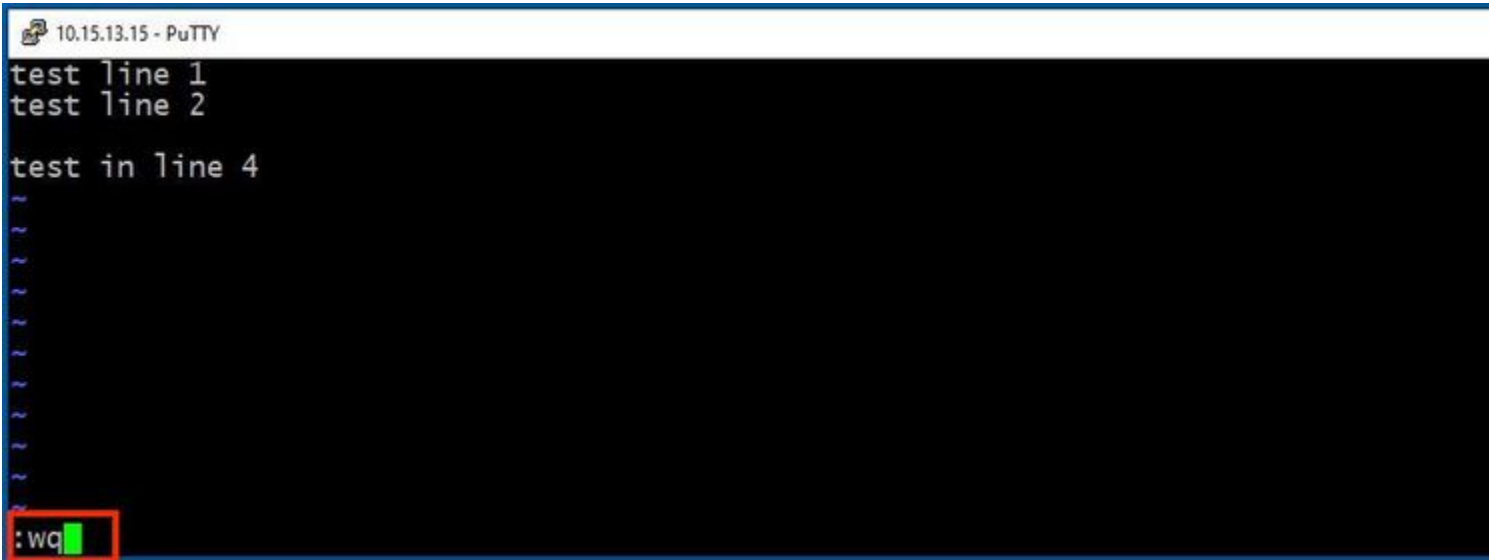
Press **Enter** to access the file with the Vi Editor. The output shows the information within the file and allows you to modify it, if needed.



If you need it to delete or add text, type the letter **i** to enter the Insert Mode. Notice that in the lower left corner, the file name changed to the word **INSERT**.



In **Insert mode**, it is possible now to make any modifications as needed. For example:



```
10.15.13.15 - PuTTY
test line 1
test line 2

test in line 4
~
~
~
~
~
~
~
~
~
~
~
:wq
```

Afterwards, press **Enter**. The Expressway Linux prompt is now available.

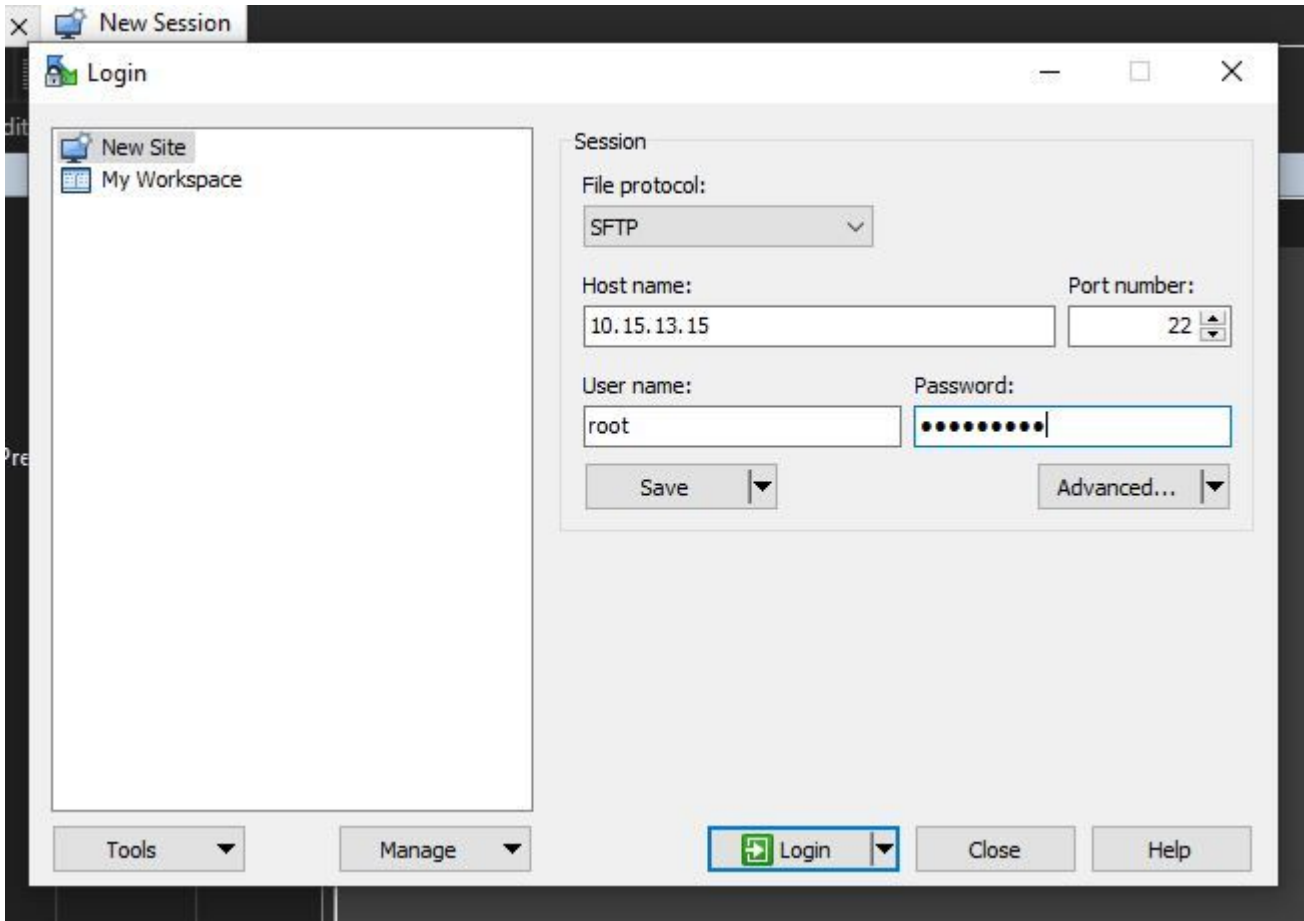
Note: The **q!** command allows you to quit Vi Editor without the need to save the changes made.

WinSCP Basics

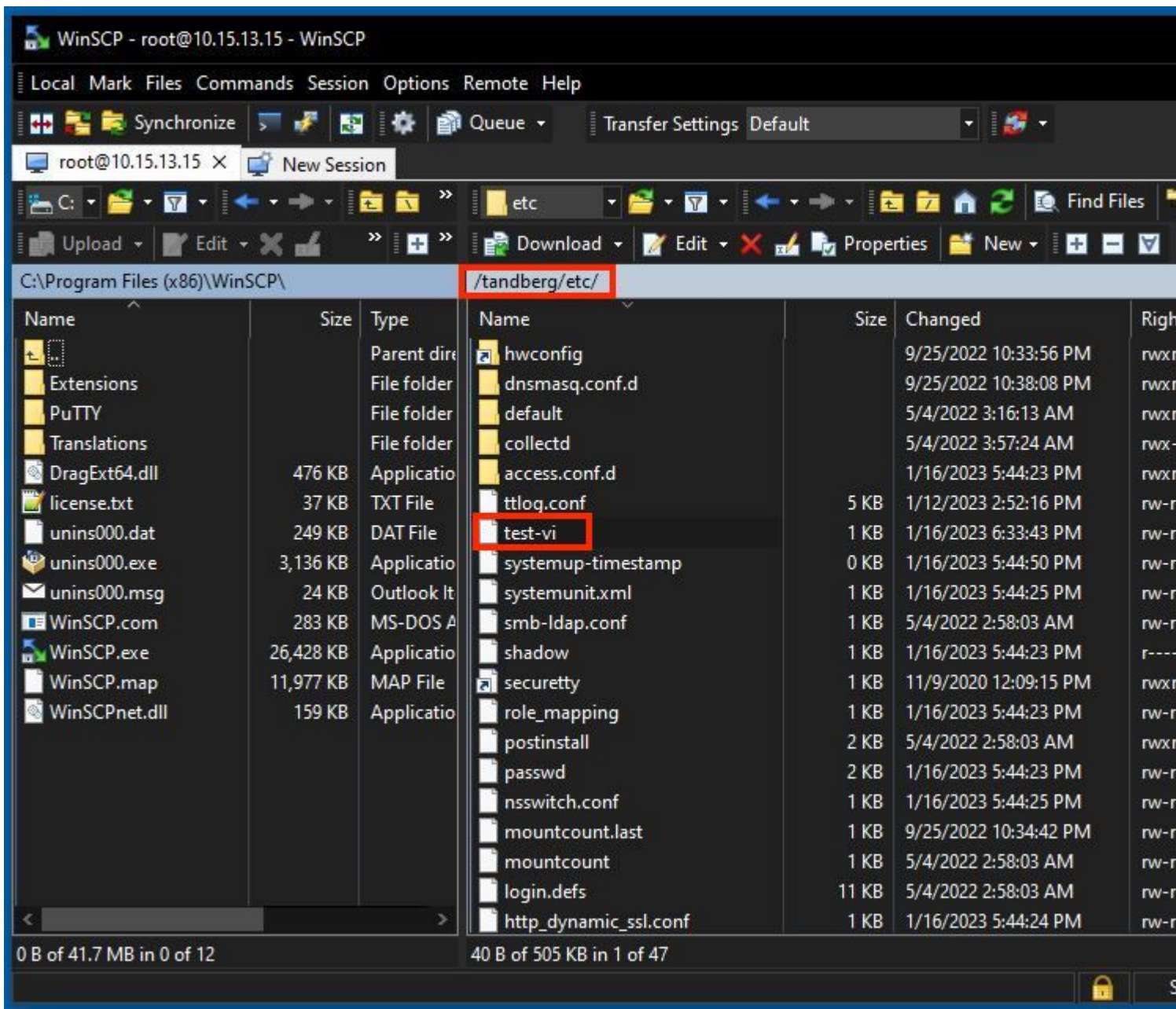
WinSCP is an open source, free SFTP client, FTP client, WebDAV client, S3 client, and SCP client for Windows. Its main function is file transfer between a local and a remote computer. Beyond this, WinSCP offers script and basic file manager functionality.

How to Use WinSCP Text Editor

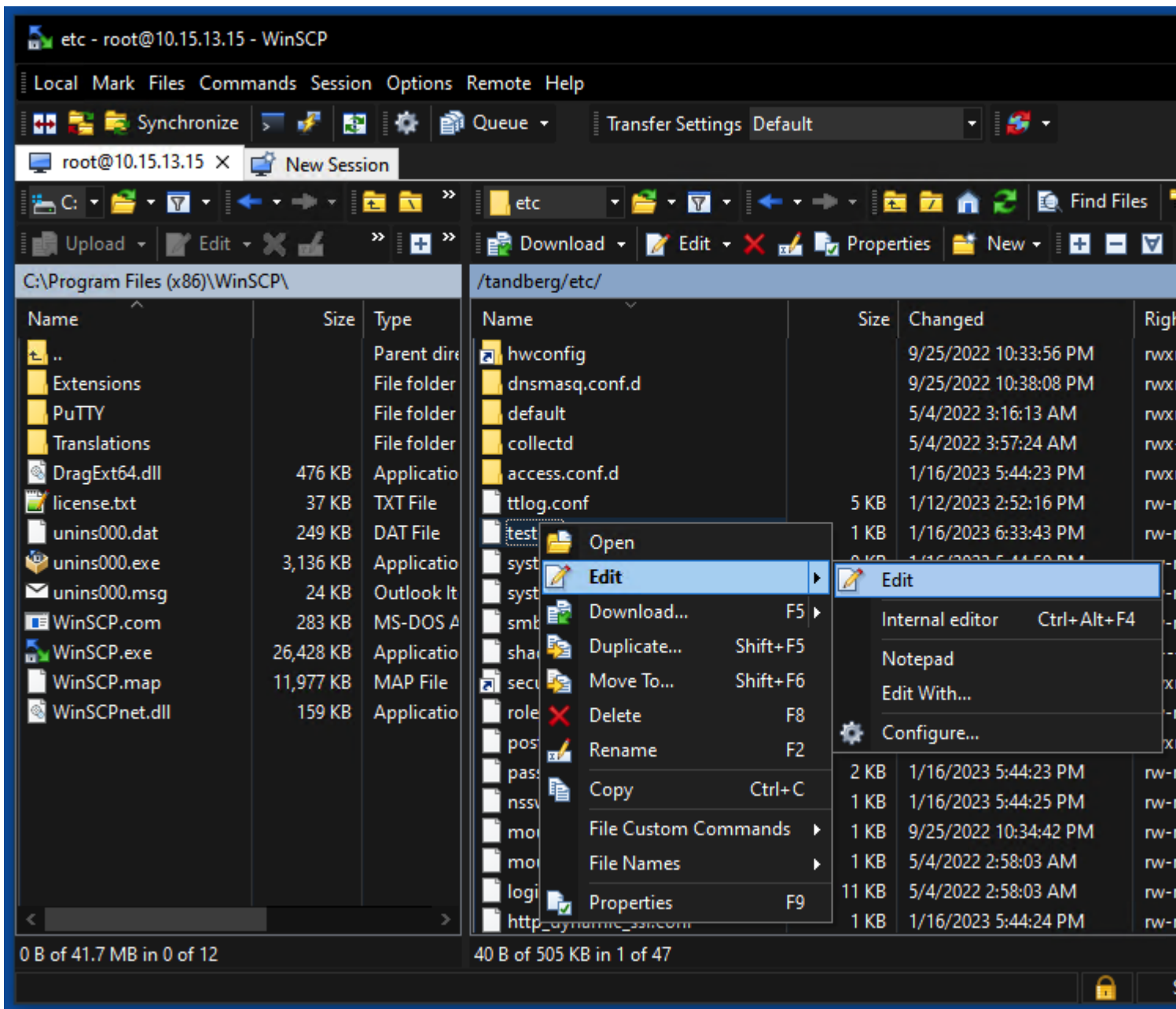
Access the Expressway with the WinSCP application with **root** credentials.



WinSCP allows you to navigate in Expressway as if it is a Windows folder in any Windows PC. This image shows files on path /tandberg/etc where the test-vi file is stored.



Double-click, or right-click > **Edit** > **Edit** to open an internal editor, which allows you to edit the file and save it at the same time.



This image shows the same file output, with a new line: test line 6 added by the use of the WinSCP editor.

File with new line can be saved by the use of the same WinSCP text editor.

```
/tandberg/etc/test-vi - root@10.15.13.15 - Editor - WinSCP
test line 1
test line 2

test in line 4

test line 6 added using WinSCP editor|
Line: 6/6 Column: 38 Encoding: 1252 (ANSI - La) Modified
```

Verify

How to Check Changes on Files

The use of the Vi Editor is one way, but there is another Linux command that can be used. The command only allows you to print the content of a file onto the standard output stream.

Run the `cat test-vi` command on the same directory as the file.

Note: Path can also be added to the `cat` command instead. To navigate to the directory, use the `cd` command. For example: `cat /tandberg/etc/test-vi`.

```
10.15.13.15 - PuTTY
~/etc #
~/etc # cat test-vi
test line 1
test line 2

test in line 4

test line 6 added using WinSCP editor
~/etc # █
```

Additional Resources

[Basic Linux Commands](#)

[Basic Vi Commands](#)