

GUI Client for CVP Reporting Database

Contents

[Introduction](#)

[Prerequisites](#)

[Components Used](#)

[Configure](#)

Introduction

This document describes how to configure and use Graphical User Interface (GUI) client DbVisualizer to browse the Cisco Customer Voice Portal (CVP) Reporting Database.

Prerequisites

Cisco recommends that you have knowledge of these topics:

- Cisco CVP
- Informix Database
- Cisco CVP Reporting

Components Used

The information in this document is based on these softwares:

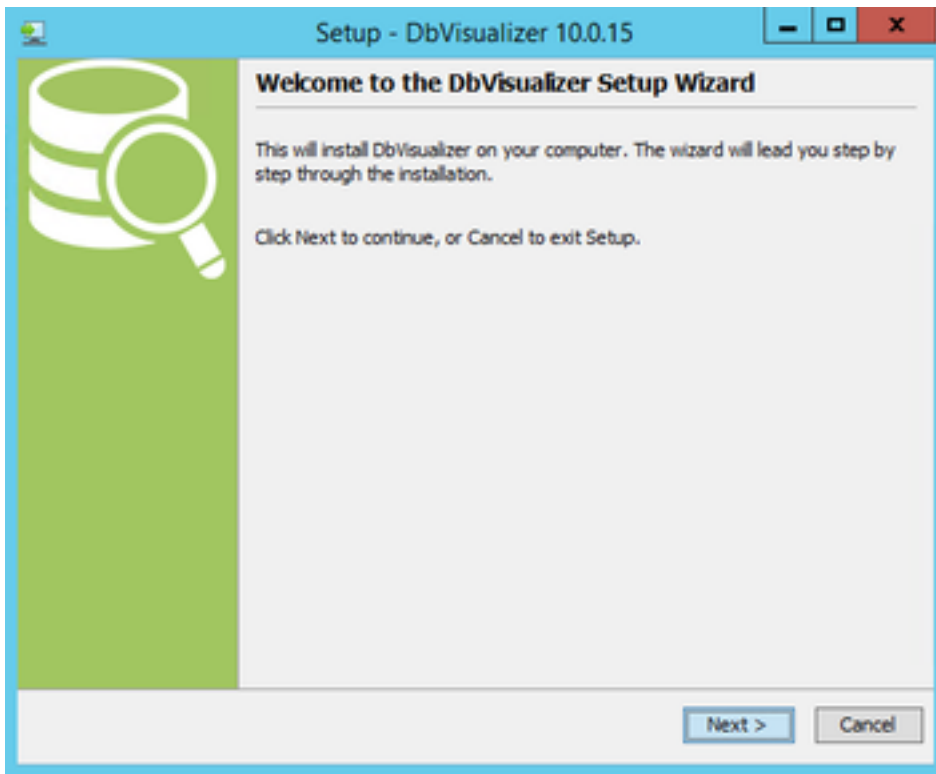
- DbVisualizer Free Client 10.0, download [here](#) or
- Cisco CVP Reporting Server 11.6

The information in this document was created from the devices in a specific lab environment. All of the devices used in this document started with a cleared (default) configuration. If your network is live, ensure you understand the potential impact of any command.

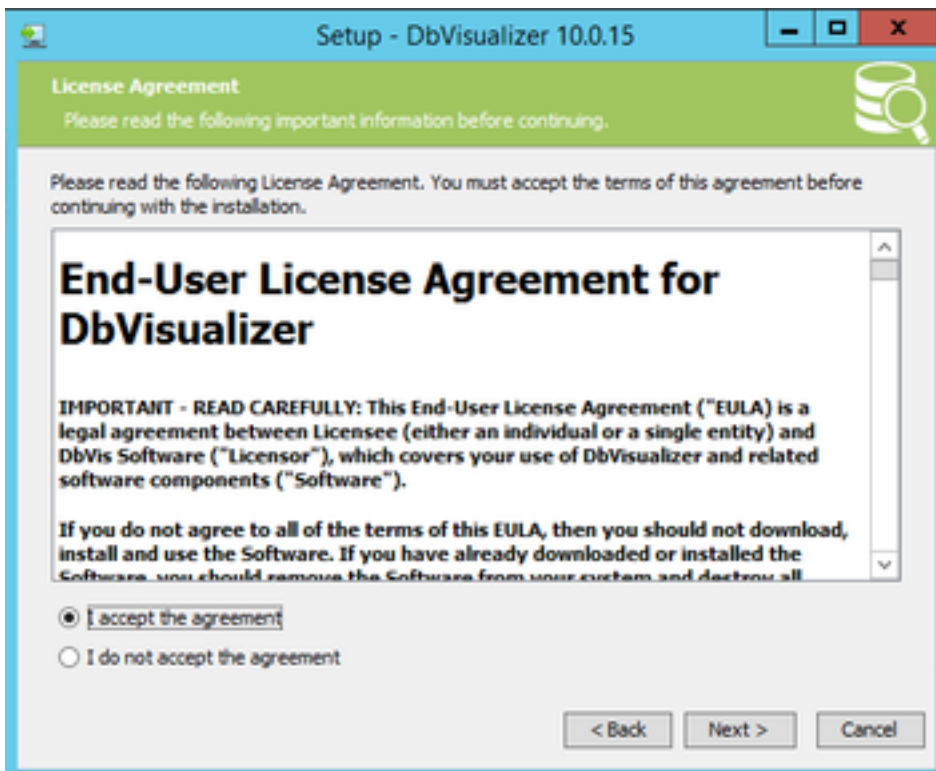
Configure

The steps to install and configure DbVisualizer Client:

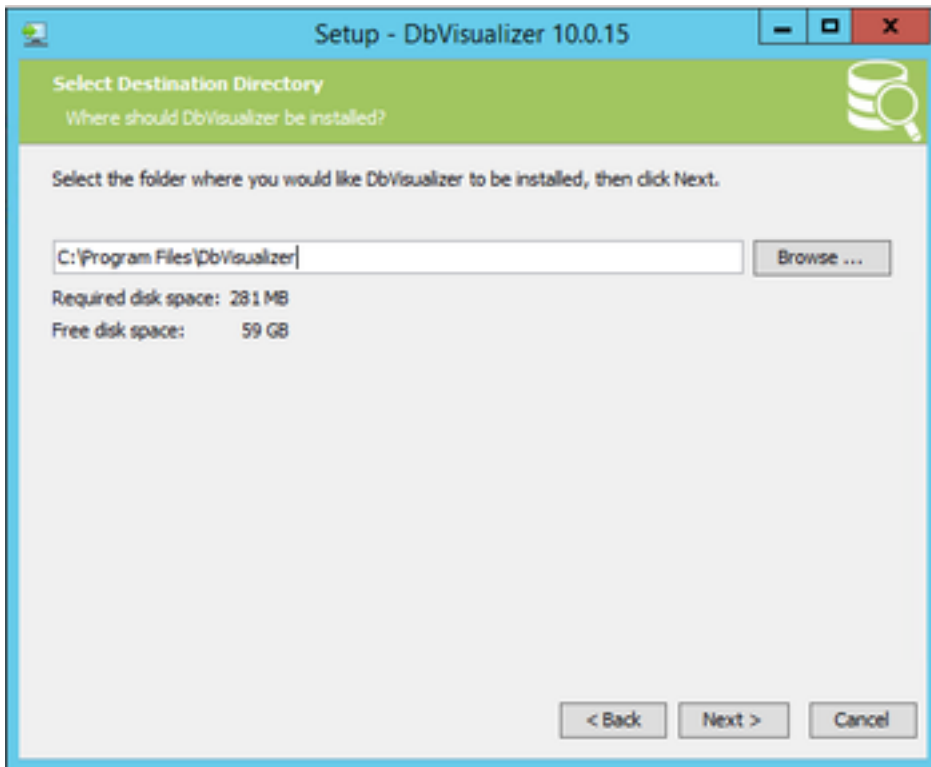
Step1. Download and install DbVisualizer Client. It can be installed directly on CVP Reporting server or a remote host.



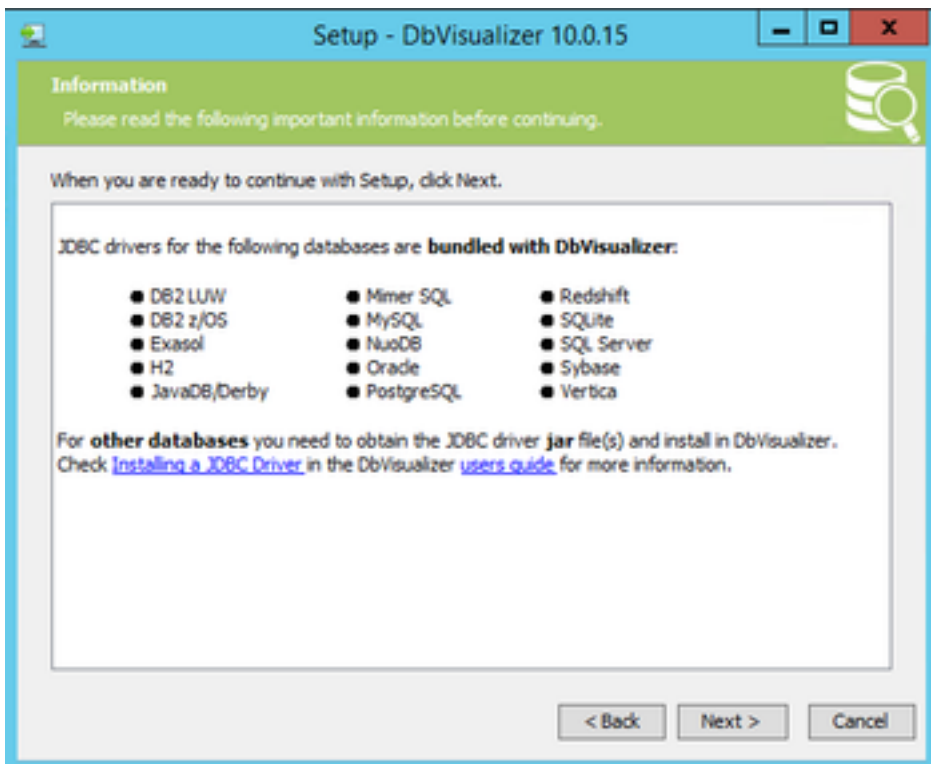
Accept license agreement.

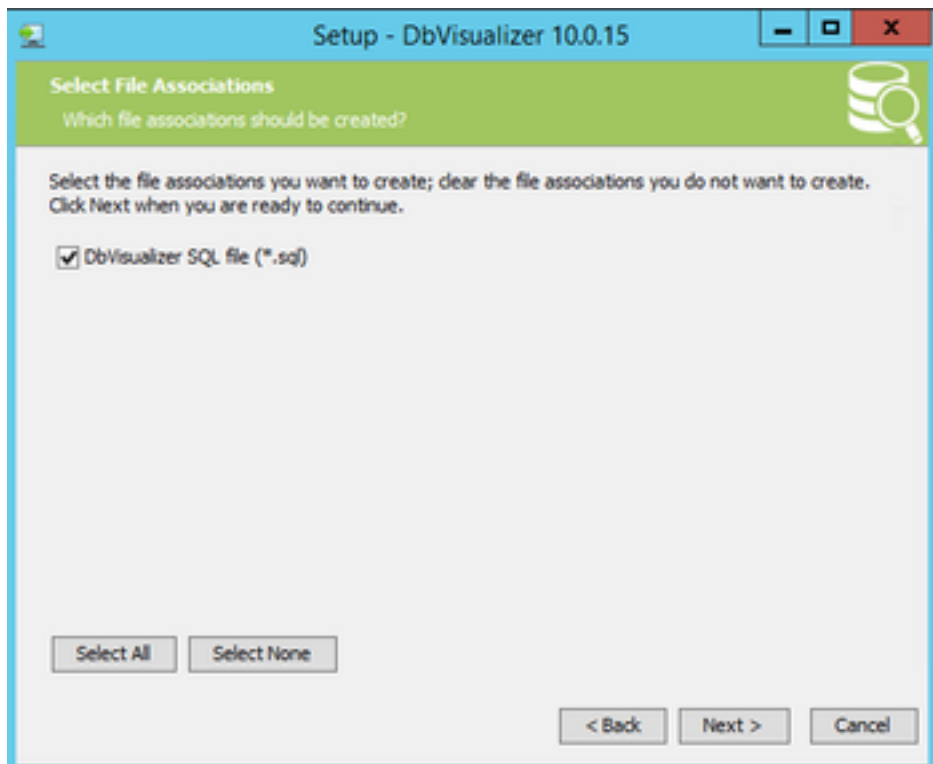
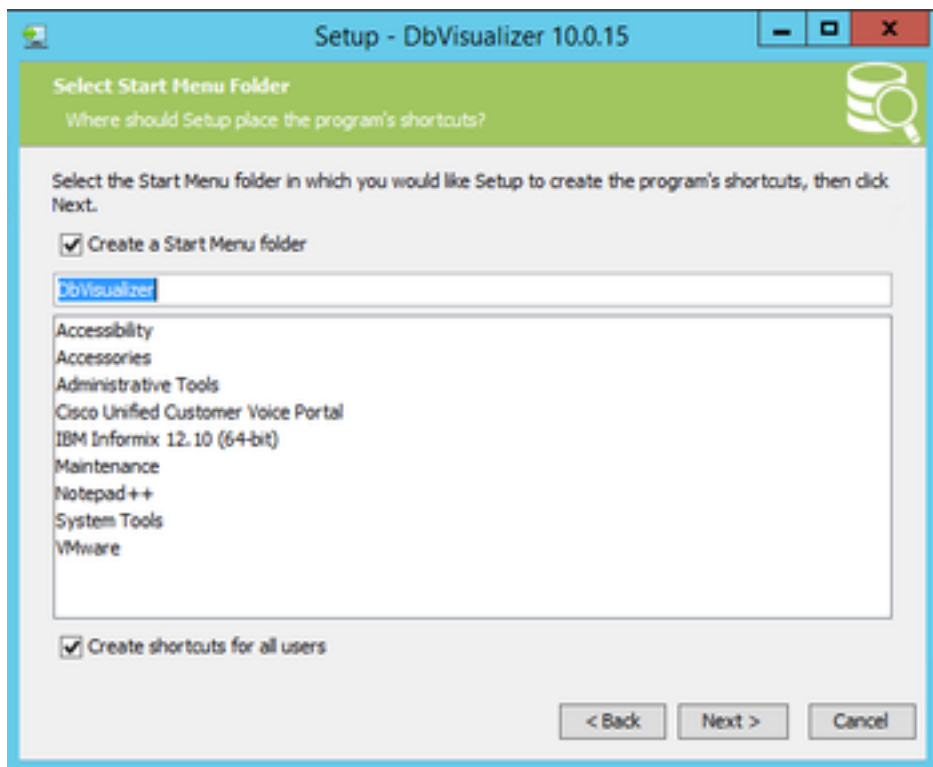


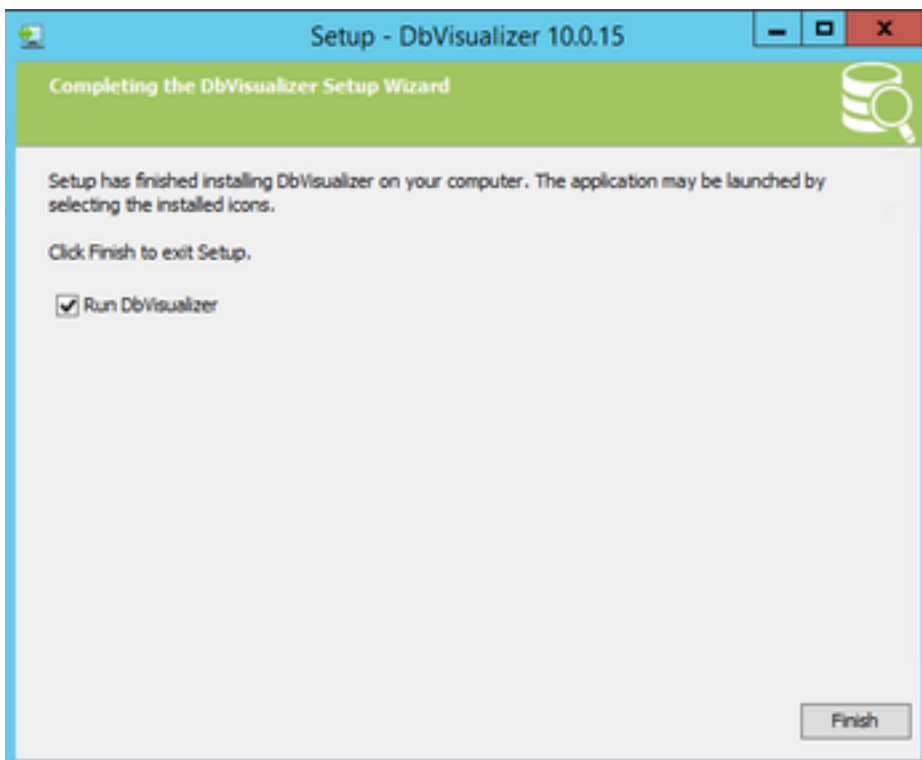
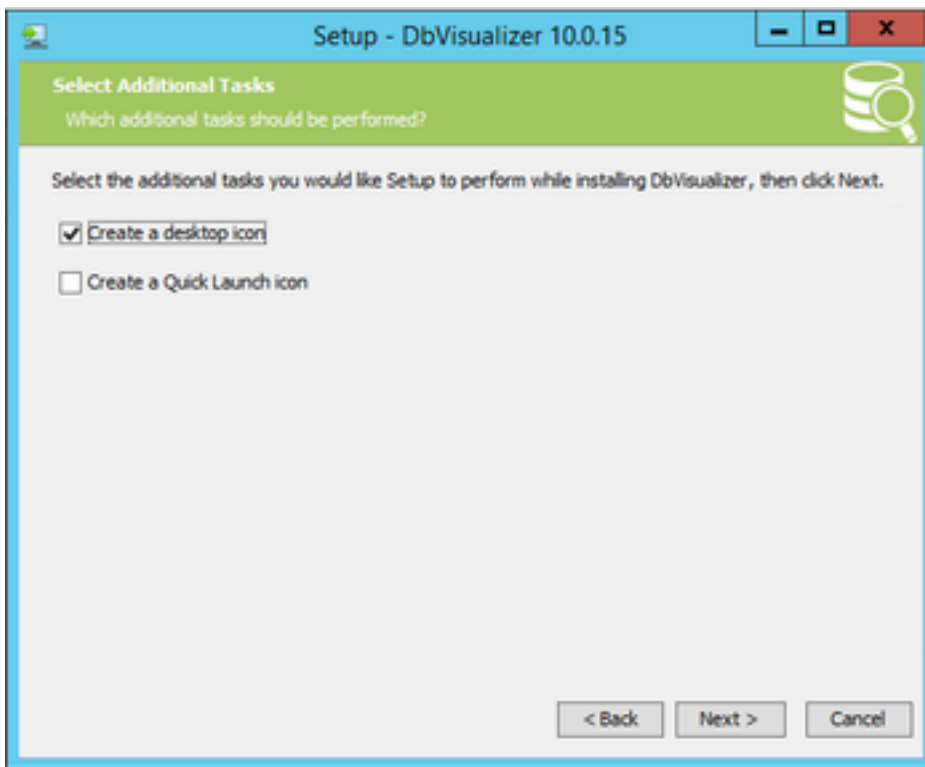
Provide location for the installation.



The list of supported databases by default. Informix DB not in the list, but you can import correct JDBC driver later.

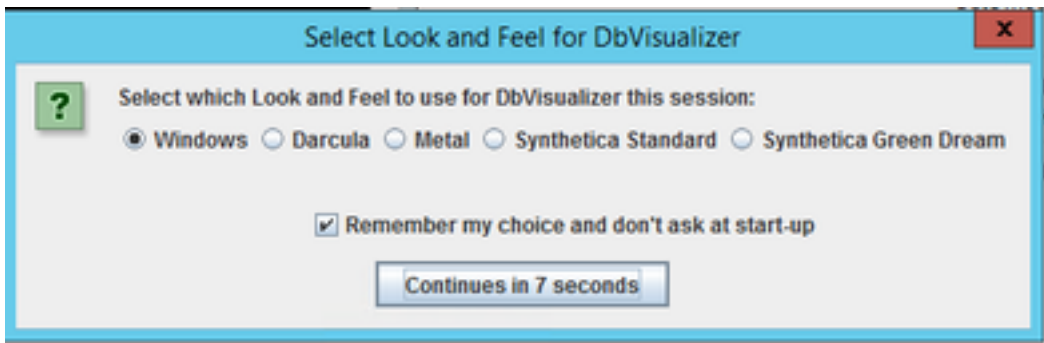






Step2. Create a new connection to CVP Informix database.

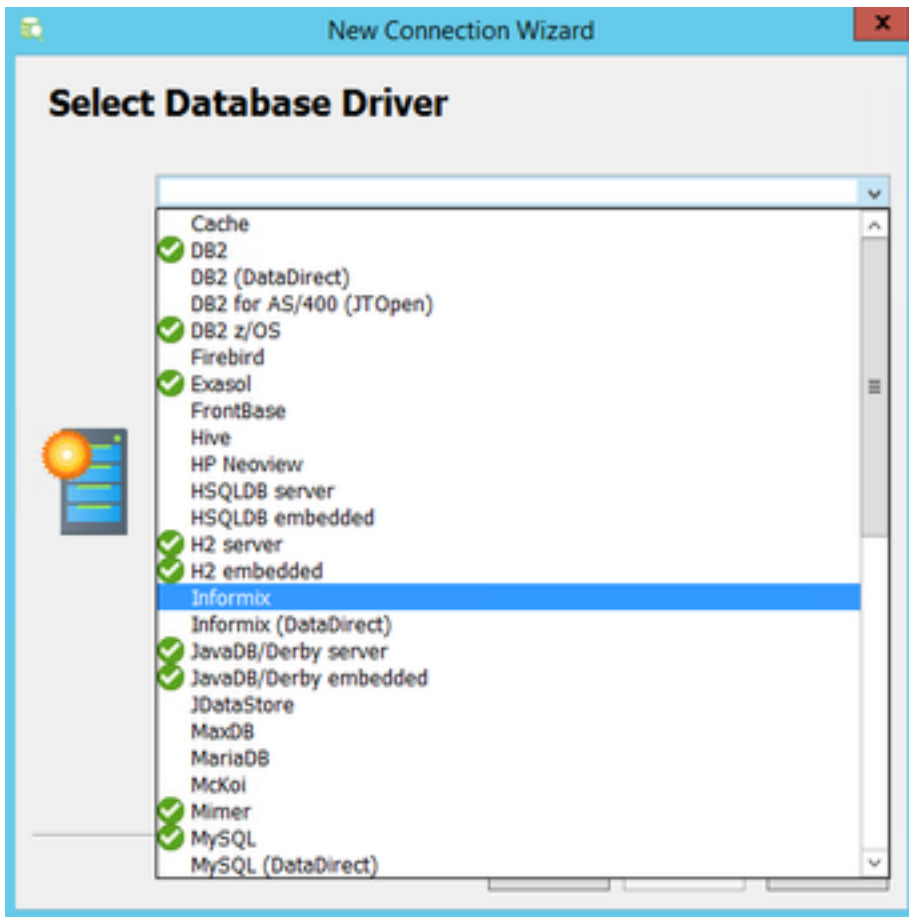
First time you open DbVisualizer, it asks for the preferred skin. Check **Remember my choice and don't ask at start-up**



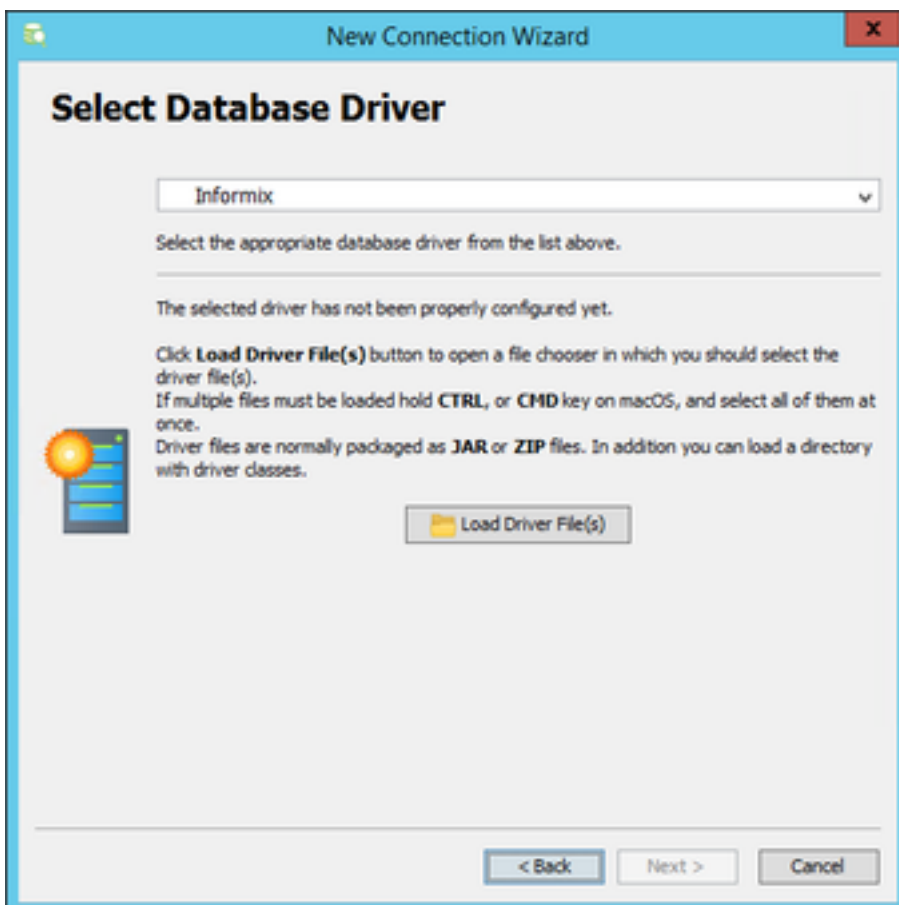
New connection wizard window appears. Give a name for the connection.



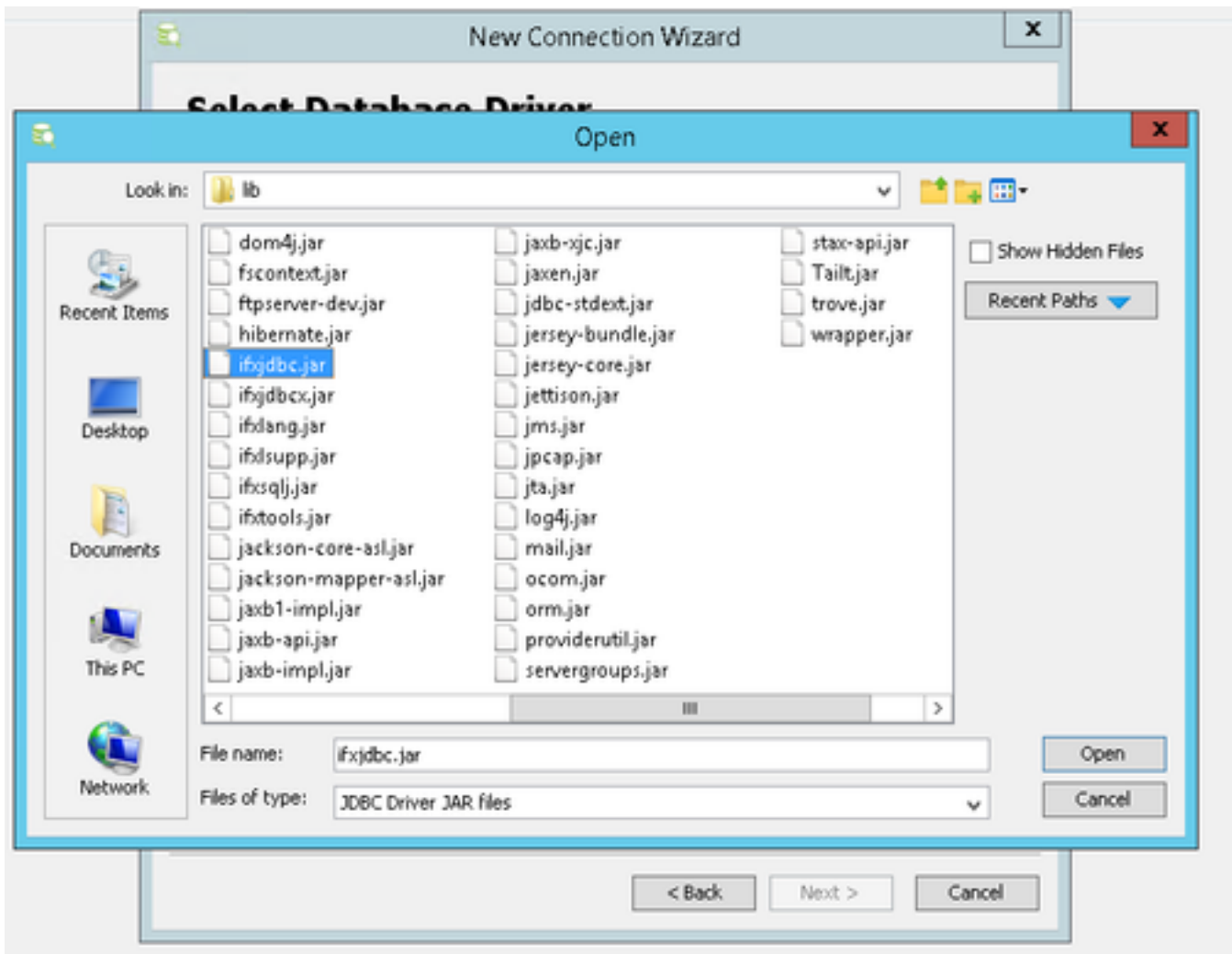
Select **Informix** database from the list.



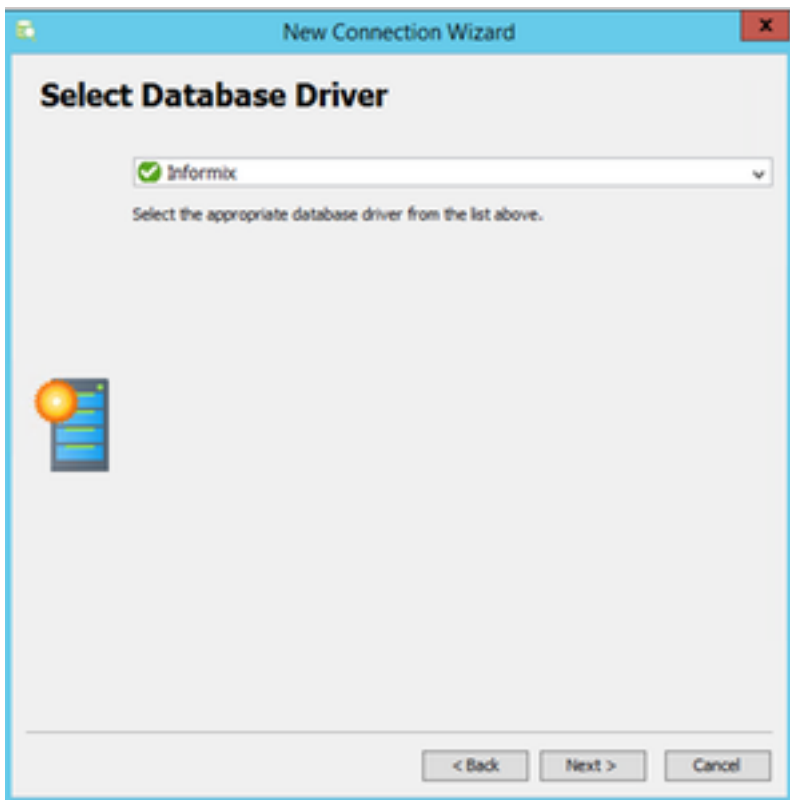
For Informix database you need to provide a driver file. Select **Load Driver File(s)**



Locate **ifxjdbc.jar** file from **C:\Cisco\CVP\lib** if DbVisualizer Client installed on CVP reporting server directly, otherwise copy the driver file from CVP reporting server.



The driver file has been successfully uploaded. Select **Next**.



Provide database server details

cvp_db
Informix

Connection

Notes

Database

Settings Format

Server Info

Database Server: CVPRreporting *CVP Reporting Hostname or IP*

Database Port: 1526

Database: cvp_data

Database Server: cvp *Informix DB server name*

Authentication

Database Userid: cvp_dbadmin

Database Password: [REDACTED]

Options

Auto Commit:

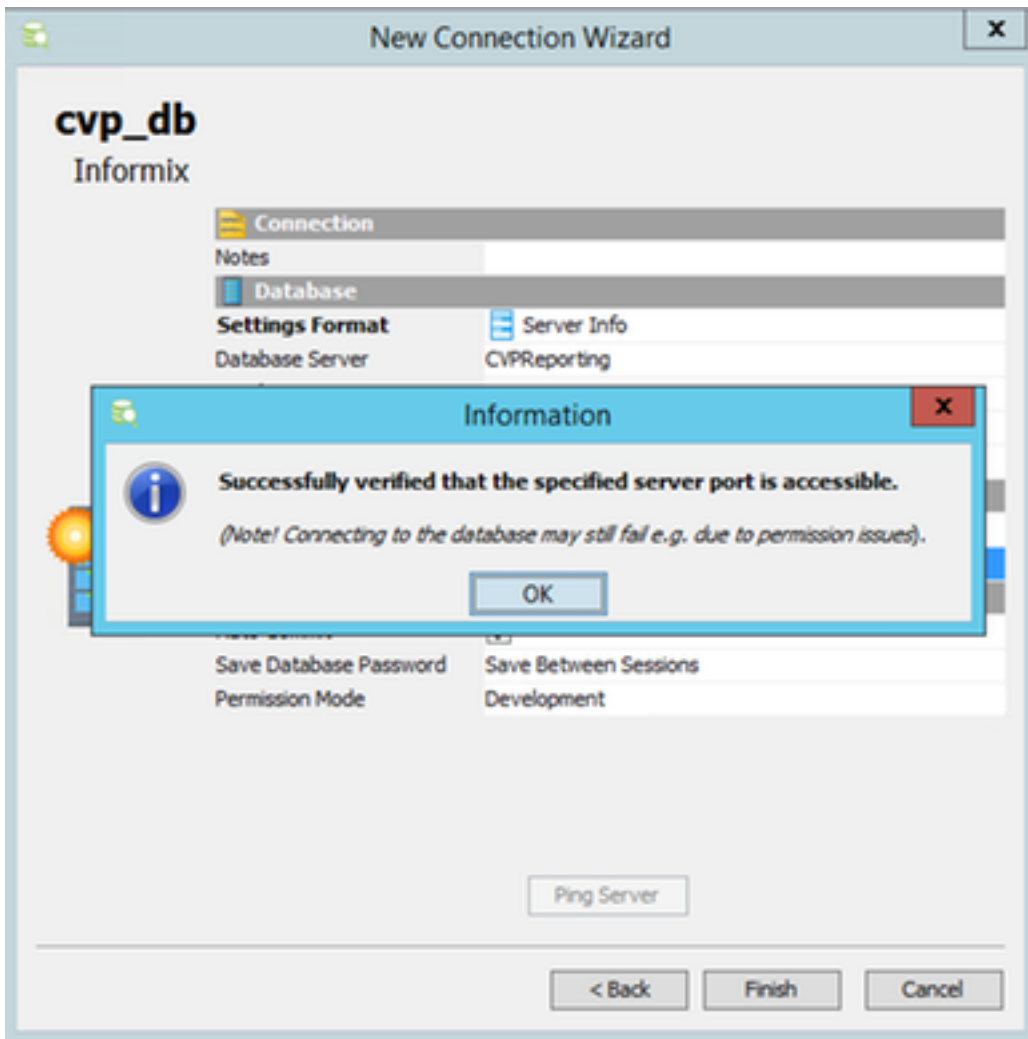
Save Database Password: Save Between Sessions

Permission Mode: Development

Ping Server

< Back Finish Cancel

Select **Ping Server** and ensure ping is successful. Then select **Finish**.



Now you can explore databases and run Structured Query Language (SQL) queries.

