

Configure Port Type on Intersight Managed Mode

Contents

[Introduction](#)

[Prerequisites](#)

[Requirements](#)

[Components Used](#)

[Background Information](#)

[Configure](#)

Introduction

This document describes how to configure the Port Types of the Fabric Interconnects (FI) on Intersight Managed Mode (IMM).

Prerequisites

Requirements

Cisco recommends knowledge of these topics:

- General Intersight Managed Mode (IMM) knowledge
- Cisco Intersight Basics.
- Port Types and Configuration.

Components Used

The information in this document is based on these software and hardware versions:

- Cisco UCS 6454 Fabric Interconnect
- Cisco Intersight software-as-a-service (SaaS)

The information in this document was created from the devices in a specific lab environment. All of the devices used in this document started with a cleared (default) configuration. If your network is live, ensure that you understand the potential impact of any command.

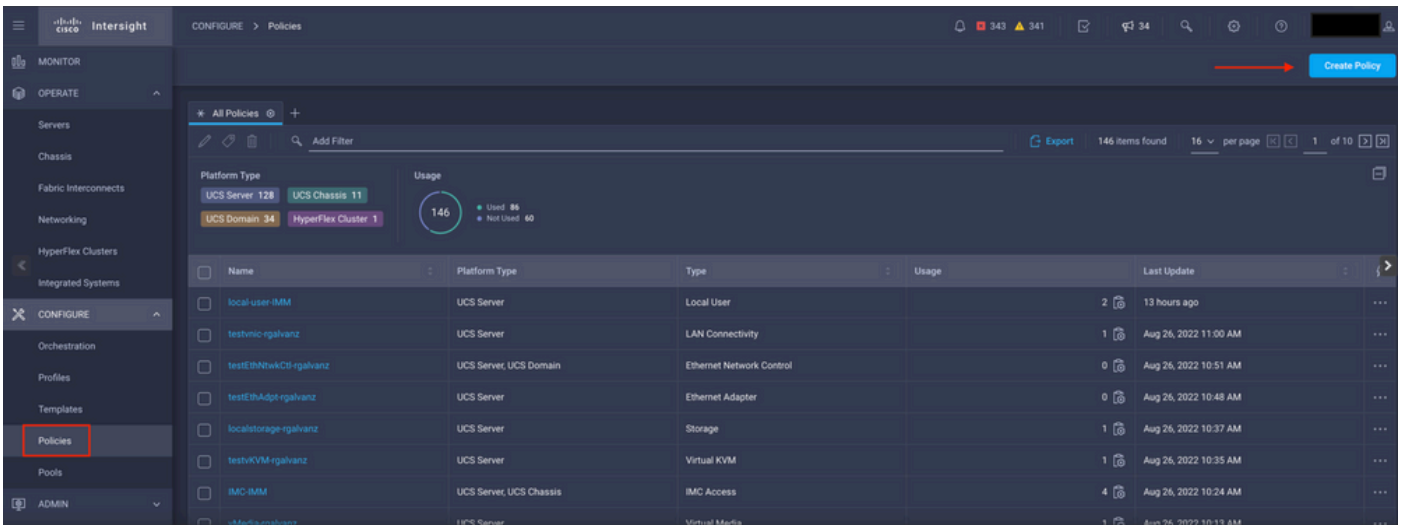
Background Information

Intersight Managed Mode (IMM) in order to configure the port configuration or 'port role' for example Server or Network Uplink you must create policies and assign them to a domain profile.

Configure

Step 1. Create a Port Policy.

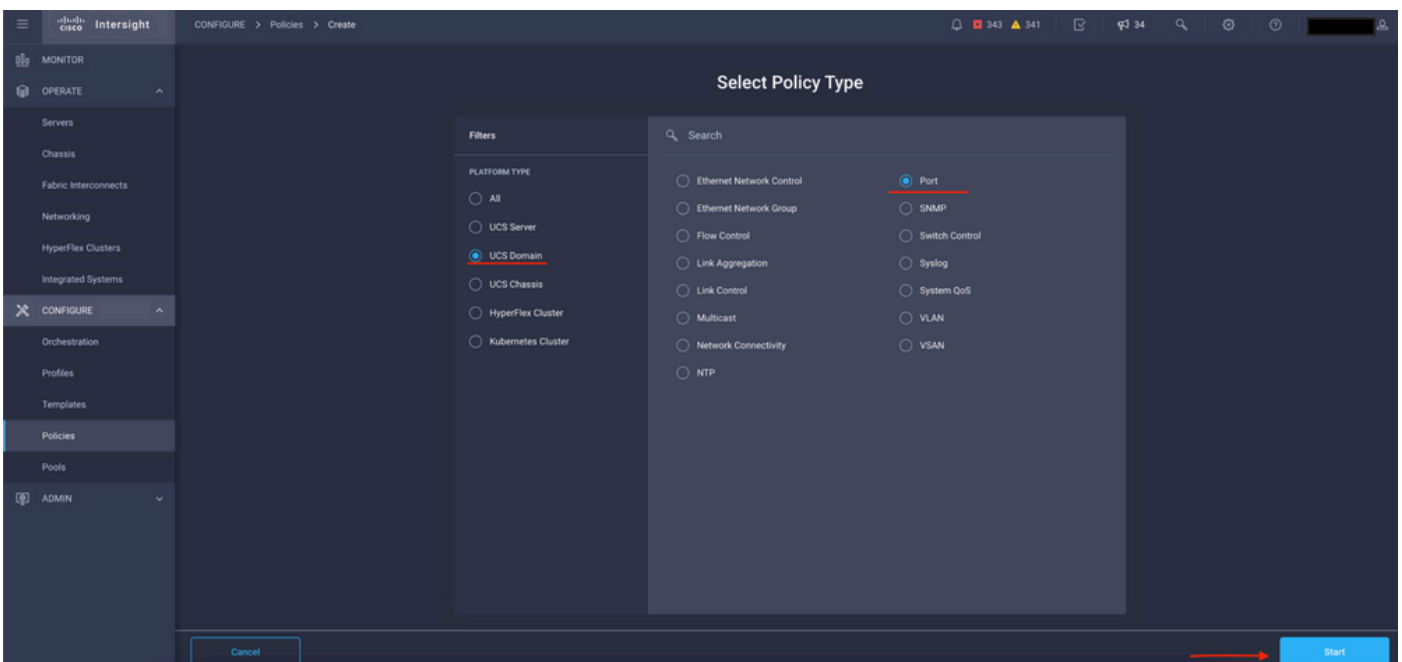
Go to **Configure --> Policies --> Create Policy.**



Create Policy view

Select **UCS Domain** and **Port**.

Click in **Start**.



Select Policy Type view

Set the values for the Policy. **Organization**, **Name**, and **Switch Model**.

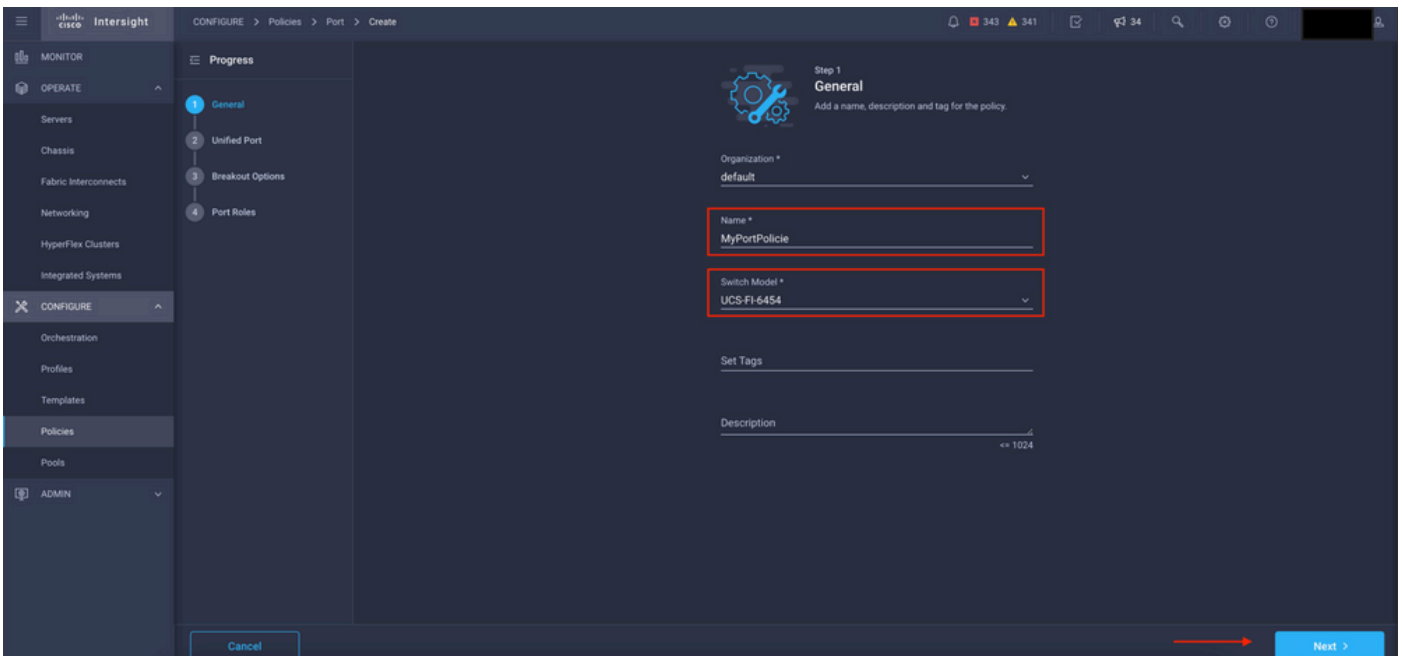
In this example the values that were configured are:

-**Organization** default

-**Name** MyPortPolicie

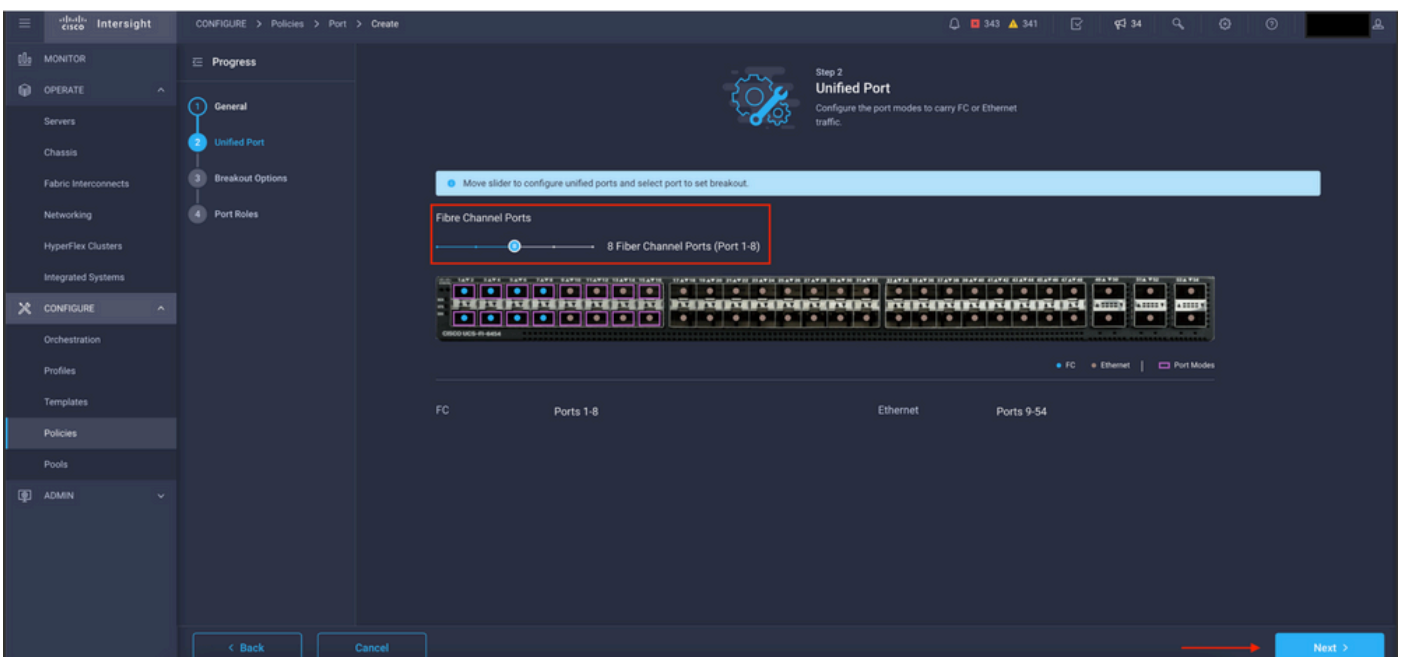
-**Switch Model** UCS-FI-6454

Click in **Next**.



Policy Details view

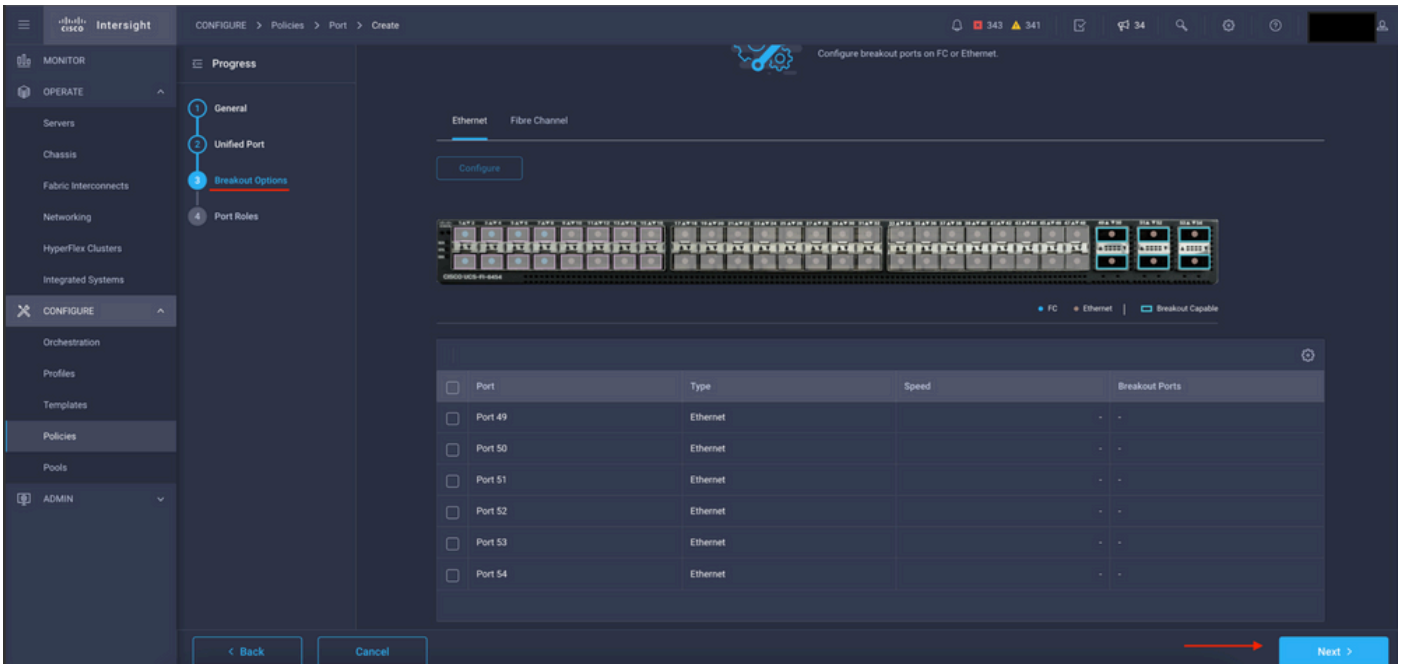
Now, you have the option to configure the **"Unified Ports"** as **FC** or **Ethernet**. The ports on the left (blue) can be configured as FC and on the right (purple) can be configured as Ethernet.



Unified Ports view

Note: If you change the Unified ports on a fixed module, for example on the 6454 can require a reboot when the profile is deployed in later steps.

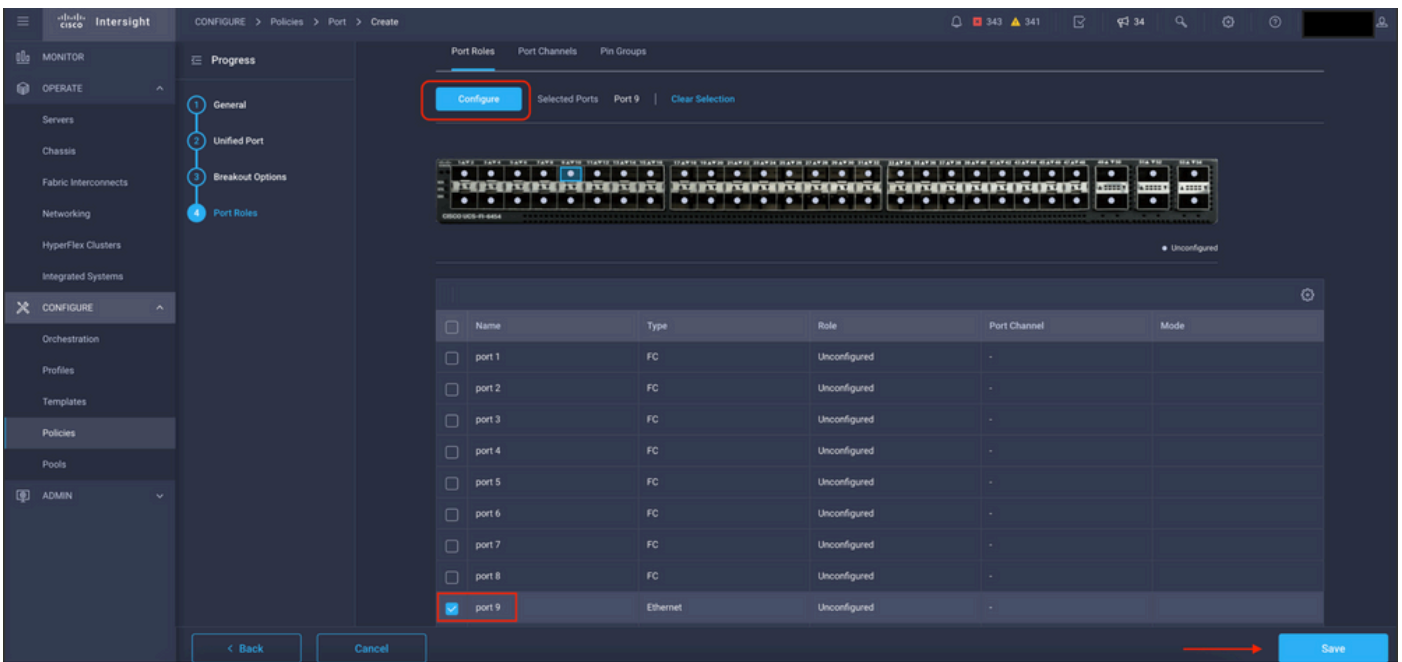
You have the option to configure the **"Breakout Cables"**. In the FI 6454 the **Breakout ports** go from 49 to 54.



Breakout Cables view

In **Port Roles** pane the port configuration is set.

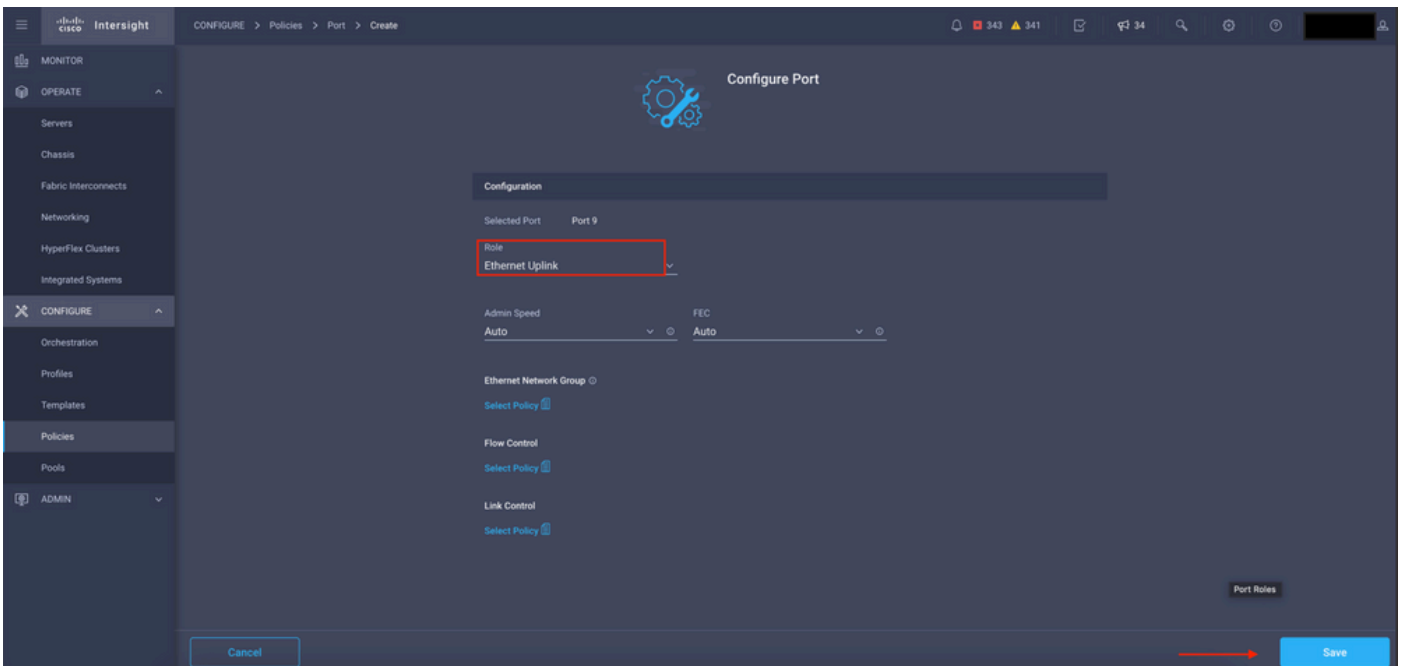
To begin, select the port to configure and click on **Configure**.



Port Roles view

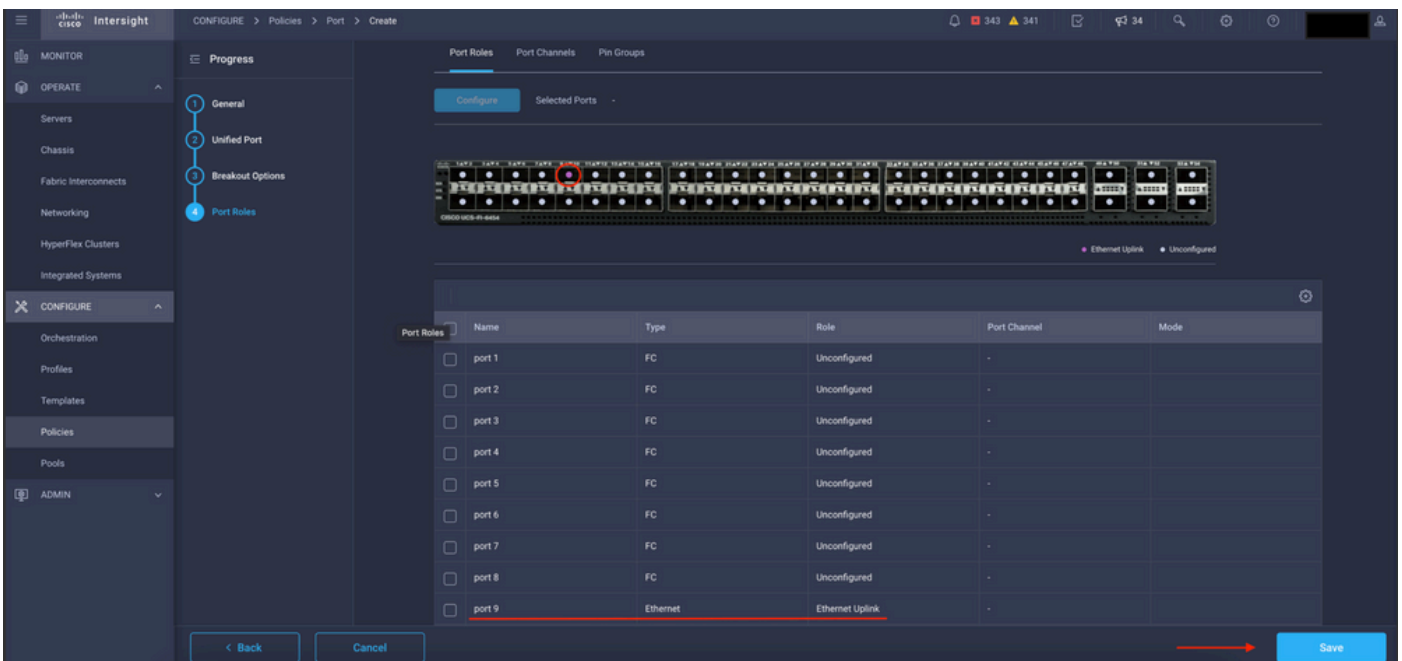
In **Configure**, set the **type**, **speed**, and **Network Policies** for the Port.

Click **Save** to save the changes.



Configure Ports details

Validate the configuration:

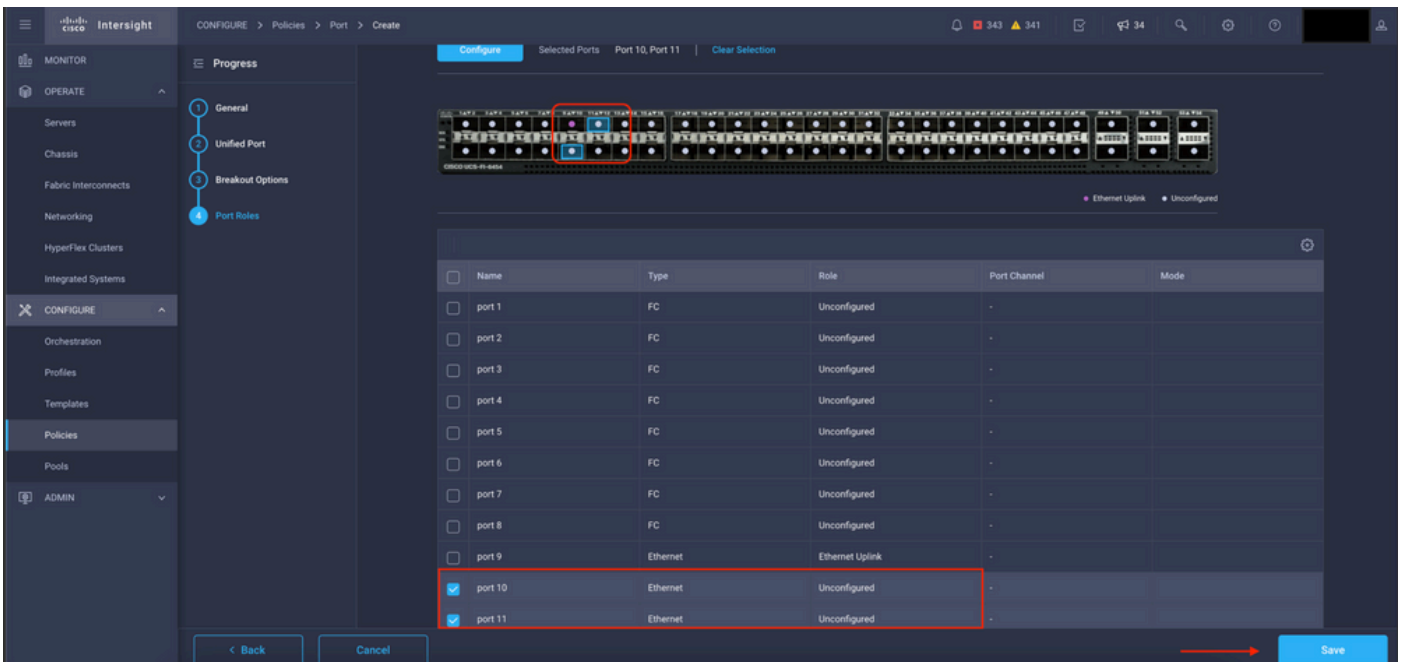


Validate the configuration

Click **Save**.

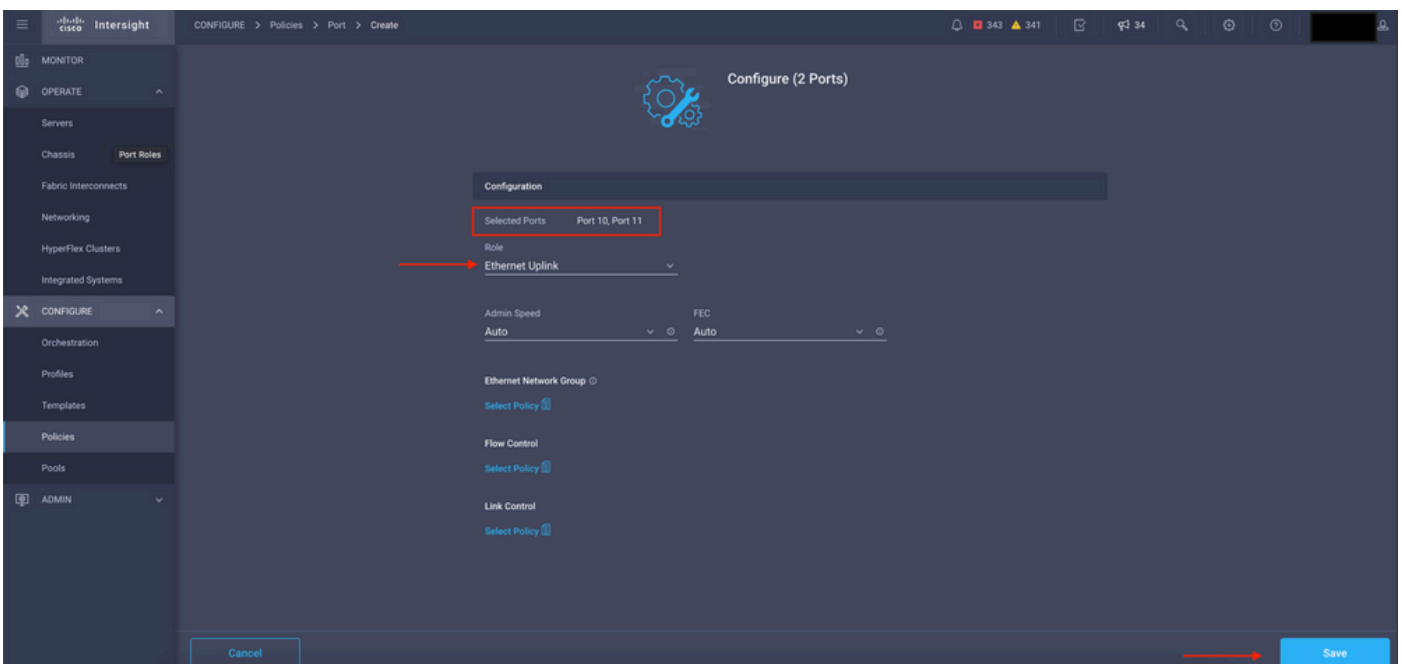
Note: You can also apply the configuration to multiple Ports at the same time.

Select the port to configure and click on **Configure**.



Ports configuration

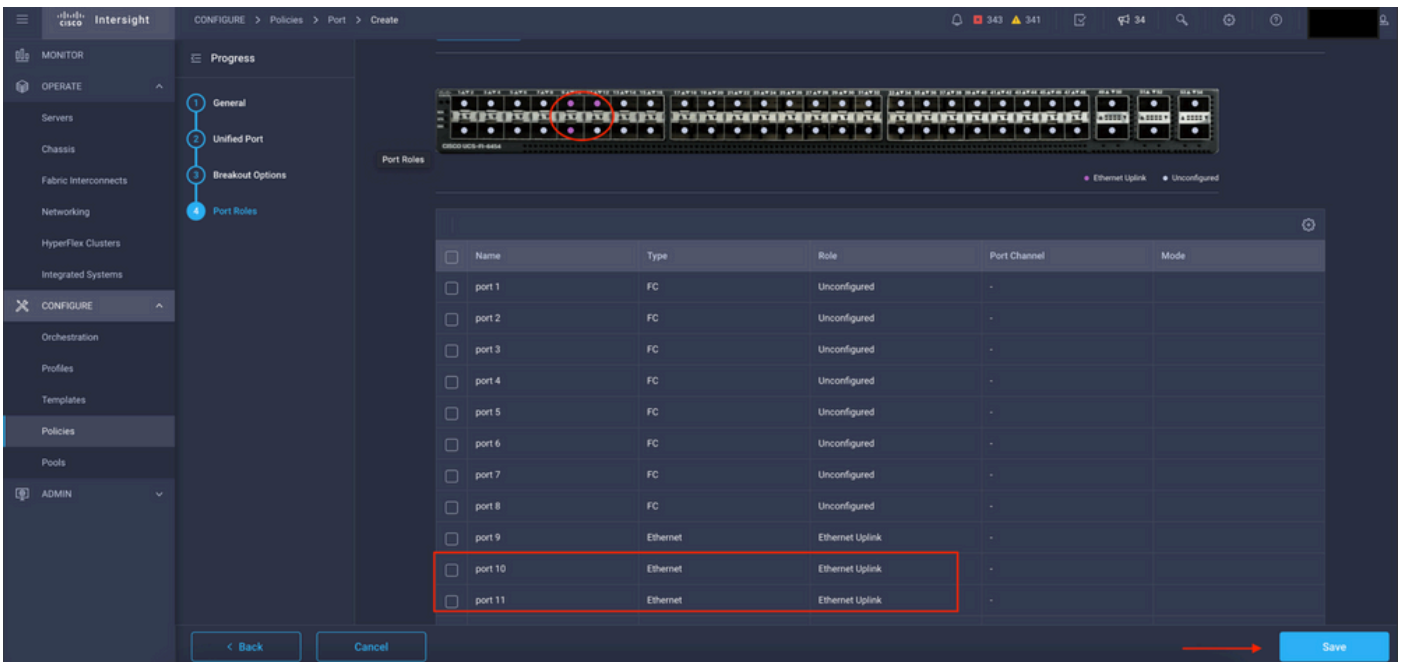
In **Configure**, set the **type, speed**, and **Network Policies** for the Ports.



Port details

Validate the configuration next.

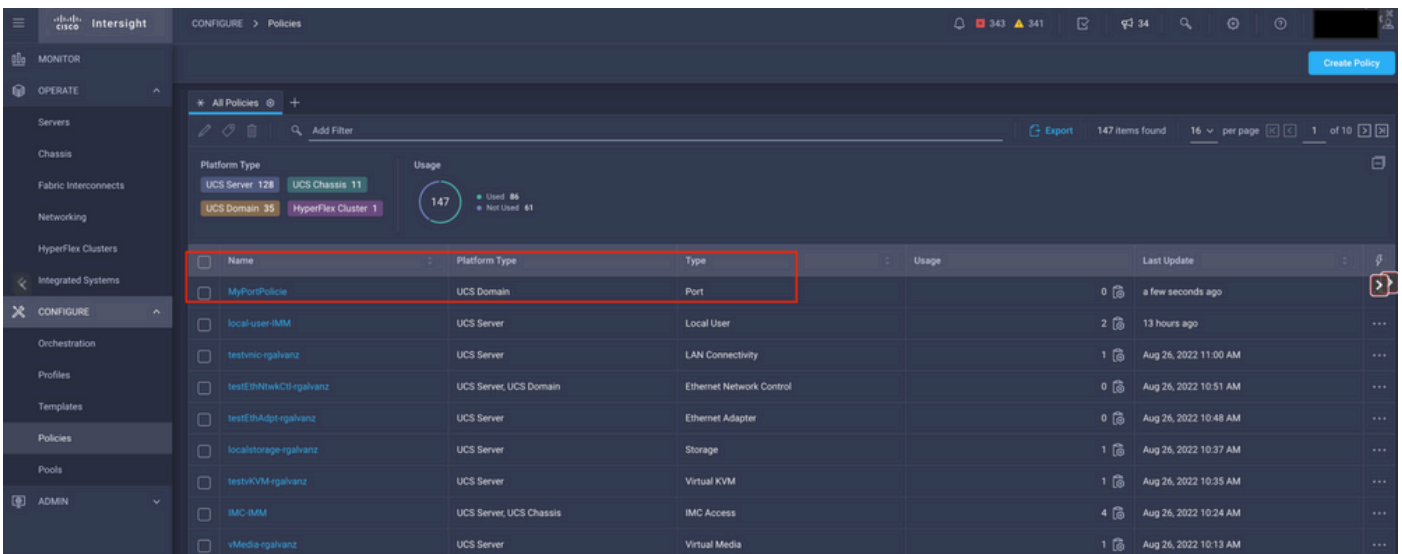
Click **Save** and save your configuration.



Validate the configuration

Validate the configuration as shown in these examples.

Your policy now appears under the **Policies** panel:

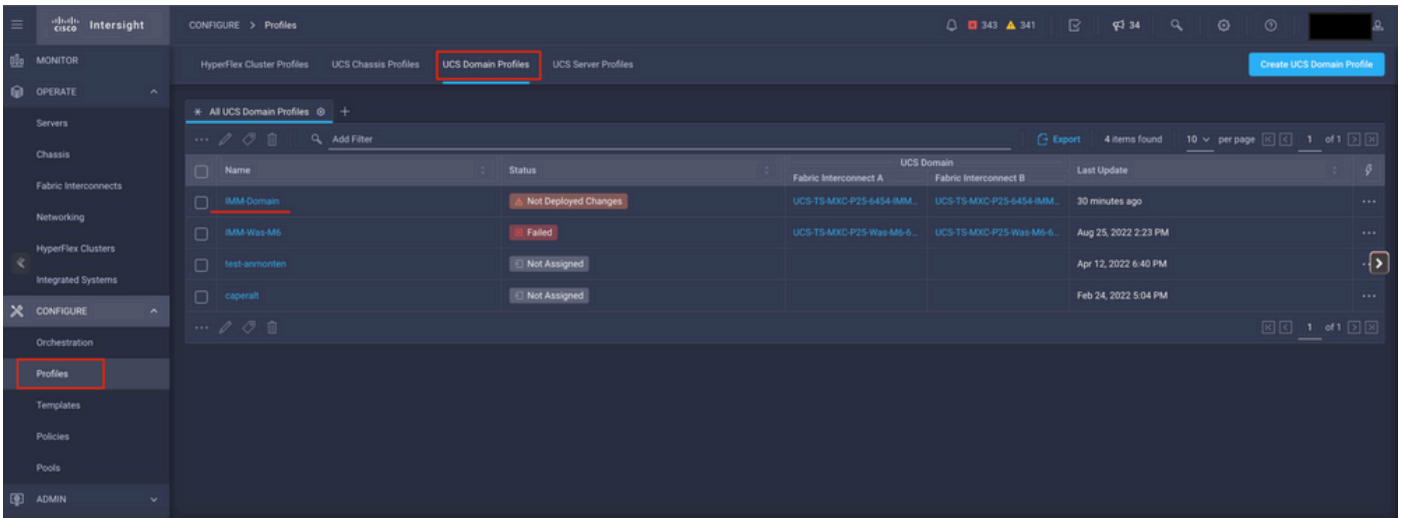


Policies panel

Step 2. Now that you have created the policy, you need to apply it to a **Domain Profile**.

Go to **Profiles --> UCS Domains Profiles --> "Domain Profile Name"**.

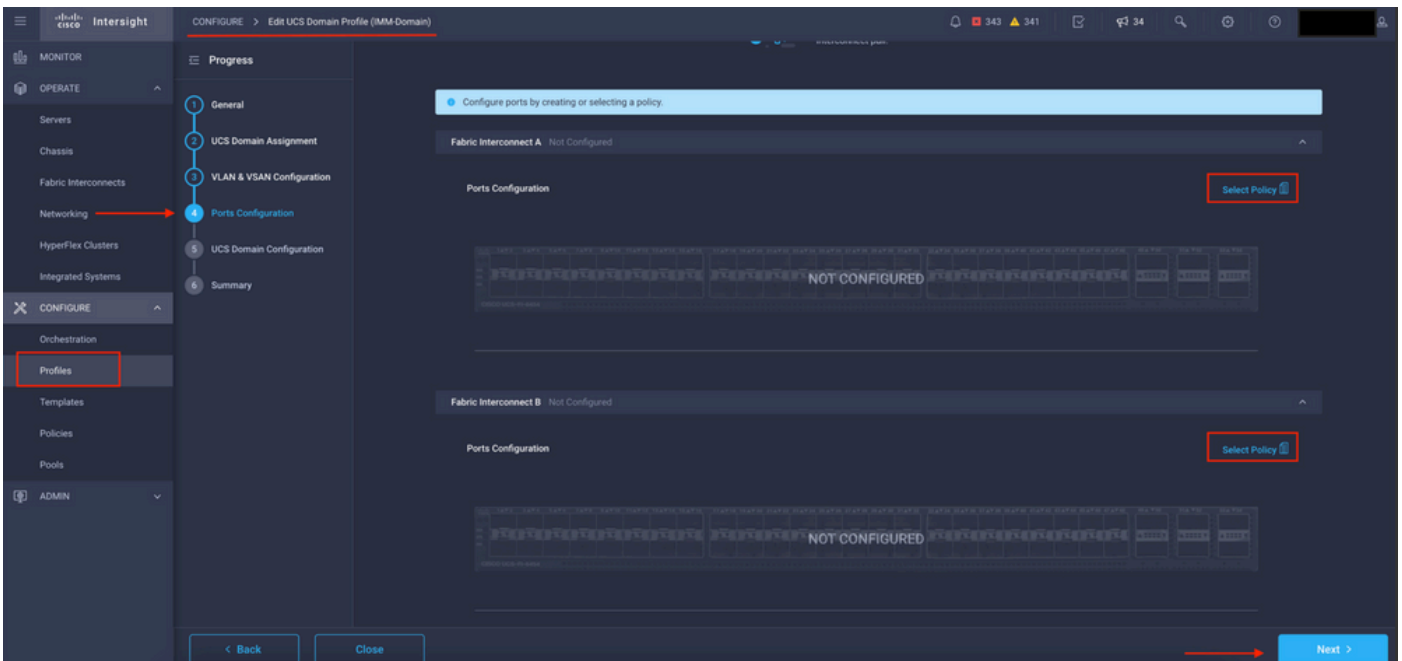
In this example, the **IMM Domain Profile** is used.



Domain Profile pane

Go to **Ports Configuration** to see the **Select Policy** option.

Click in **Select Policy** and select your policy:



Select policy pane

In this example, the Policy created before "**MyPortPolicie**" is selected.

Select Policy

Policies 3 Create New

3 items found | 50 per page | 1 of 1

Device Model UCS-FI-6454 Add Filter

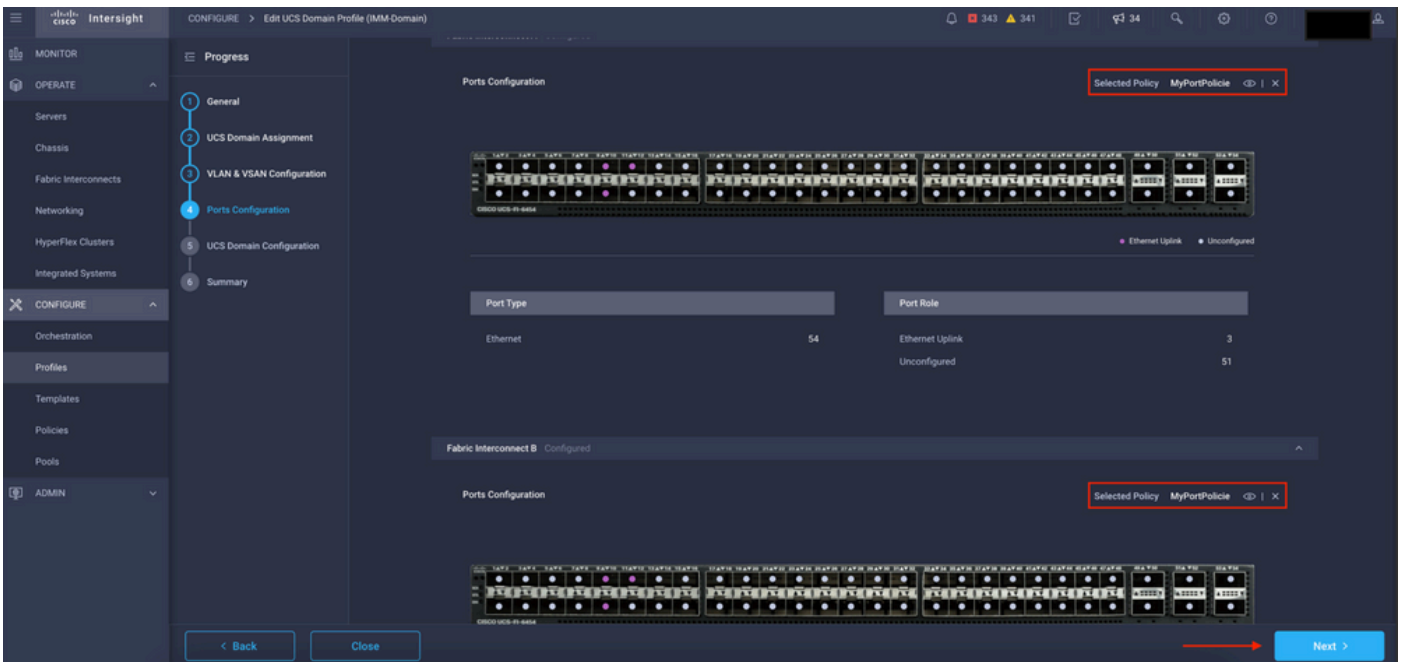
| Name | Device Model | Last Update | |
|--|--------------|----------------------|--|
| <input type="radio"/> IMM-6454-FI-A | UCS-FI-6454 | 2 minutes ago | |
| <input checked="" type="radio"/> MyPortPolicie | UCS-FI-6454 | 6 minutes ago | |
| <input type="radio"/> IMM-6454-FI-B | UCS-FI-6454 | Aug 25, 2022 2:17 PM | |

Selected 1 of 3 | Show Selected | Unselect All | 1 of 1

Select

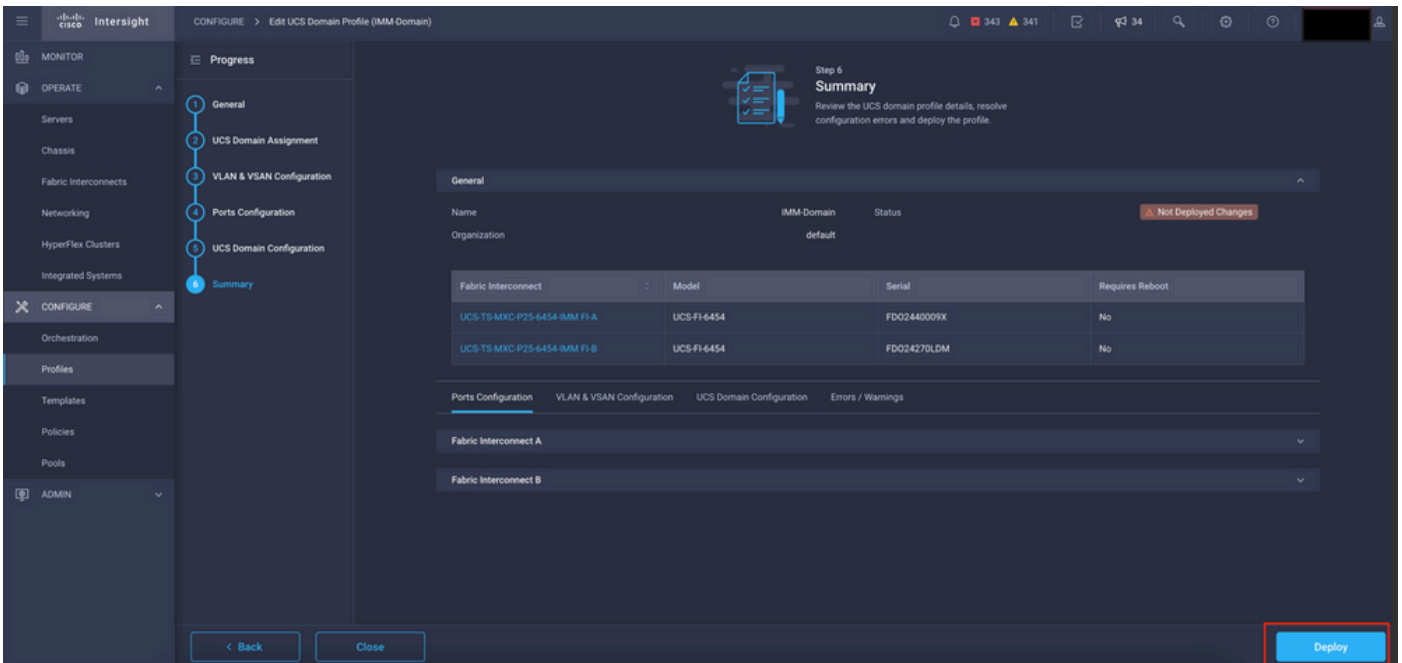
Policy selected

Validate the configuration:



Validate configuration

Step 3. Deploy the Domain Profile. In the **Summary** pane click in **Deploy**.



Deploy the changes

The configuration is deployed and the ports are configured to your selections.