

Cisco Wireless Control System Navigator

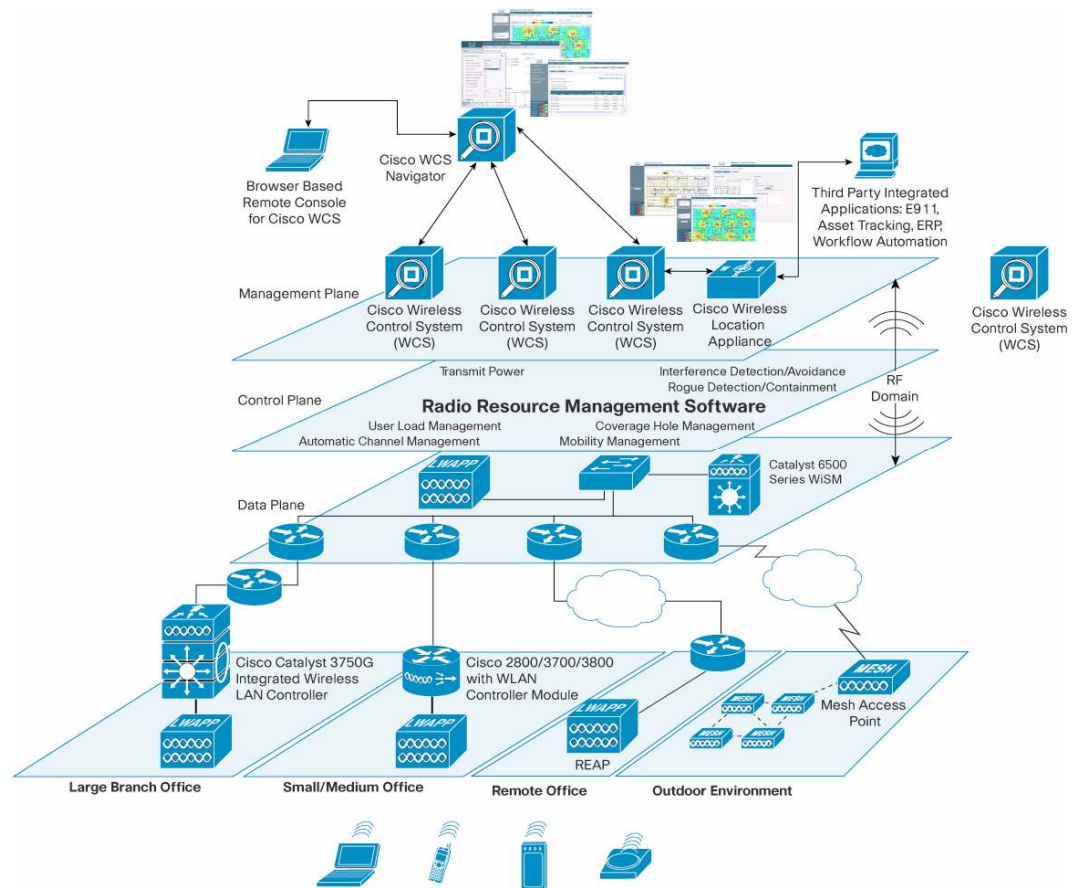
Product Overview

The Cisco® Wireless Control System (WCS) Navigator delivers an aggregated platform for enhanced scalability, manageability, and visibility of large-scale implementations of the [Cisco Unified Wireless Network](#). This powerful software-based solution gives network administrators cost-effective, easy access to information from multiple, geographically diverse Cisco WCS management platforms. It supports partitioning of the unified wireless network at the management plane. (Figure 1).

Cisco WCS Navigator runs on a server platform with an embedded database. It can support up to 20 Cisco WCS management platforms with manageability of up to 30,000 Cisco Aironet® lightweight access points from a single management console. It can be located on the same LAN as each Cisco WCS management platform, on separate routed subnets, or across a wide-area connection. All Cisco WCS management platforms connecting to Cisco WCS Navigator must be running Cisco Unified Wireless Network Software Release 4.1 or later.

Cisco WCS Navigator aggregates alarm information from connected Cisco WCS management platforms and displays this aggregated information on an easy-to-use alarm dashboard. It supports centralized network monitoring and inventory reports as well as easy setup; advanced ease-of-use capabilities; cross-system searches; location tracking; and secure parameters for administrator access, including secure single sign-on and TACACS+.

Figure 1. Enterprise Wide RF Intelligence

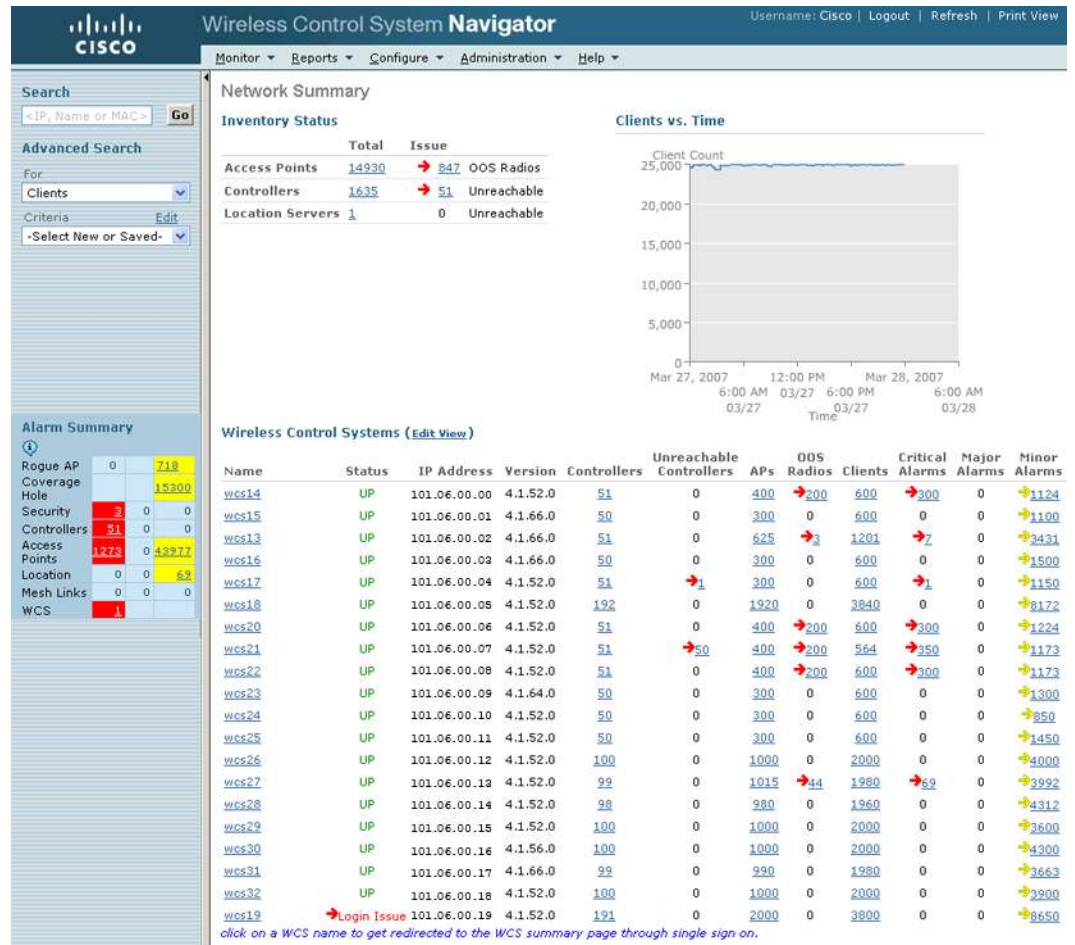


Cisco WCS Navigator delivers the following capabilities to centralize operational control and simplify the management of multiple geographically diverse Cisco WCS management platforms.

Network Monitoring

Cisco WCS Navigator supports network monitoring of all Cisco WCS management platforms. It monitors the operational status (up or down) of each individual Cisco WCS management platform and can initiate configurable alarms when it detects that a connected Cisco WCS is nonoperational. Its network summary screen displays outstanding alarms, fault summaries, client counts, and a status count of each Cisco WCS management platform, including all connected Cisco Aironet lightweight access points, Cisco wireless LAN controllers, Cisco Wireless Location Appliances, and 802.11 clients (Figure 2).

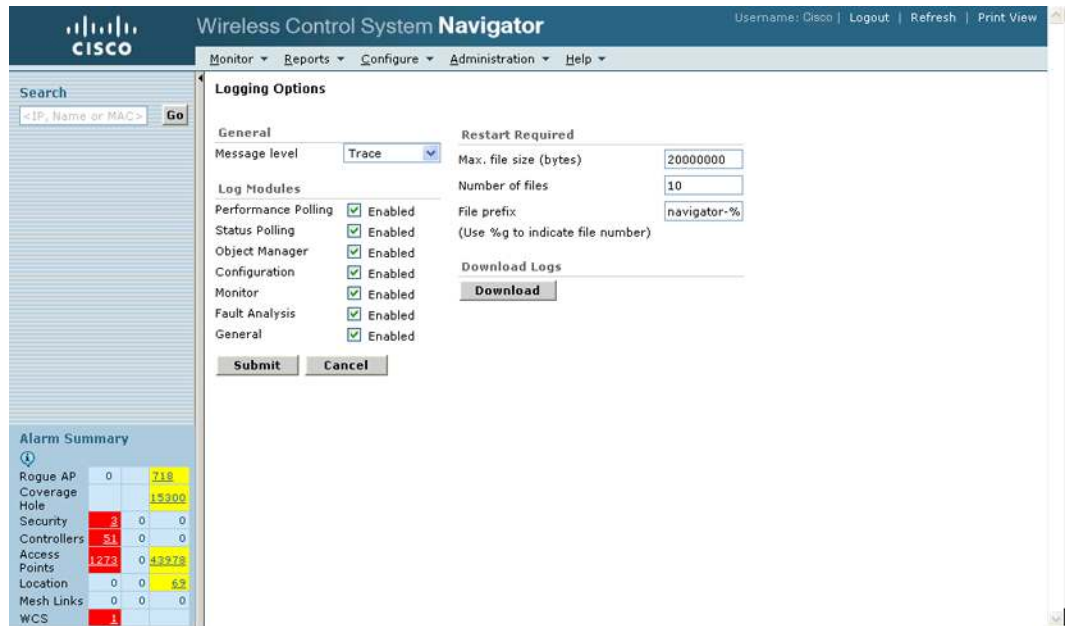
Figure 2. Cisco WCS Navigator Network Monitoring



Secure Administration

Cisco WCS Navigator delivers enterprise-class security with secure single sign-on and support for TACACS+. Access privileges are granted for all Cisco WCS management platforms through Cisco WCS Navigator by single sign-on. Individual user IDs do not need to be created on each Cisco WCS management platform. Cisco WCS Navigator uses TACACS+ to authenticate and authorize access to all Cisco WCS management platforms. TACACS+ is a Cisco protocol that supports authentication, authorization, and accounting (AAA) of administrators. Administration privileges can be defined for logging options (Figure 3)

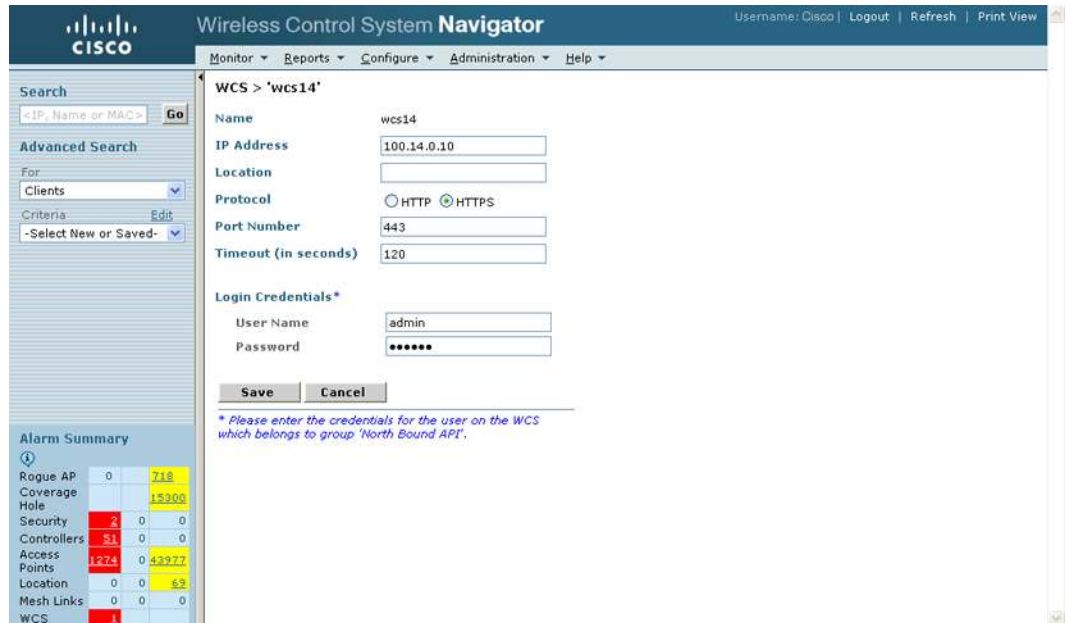
Figure 3. Logging Options



Simplified Setup and Configuration

Cisco WCS Navigator is easy to set up and configure. New Cisco WCS management platforms are easily added by specifying the username and password for each Cisco WCS management platform. Links to each Cisco WCS management platform are automatically added (Figure 4).

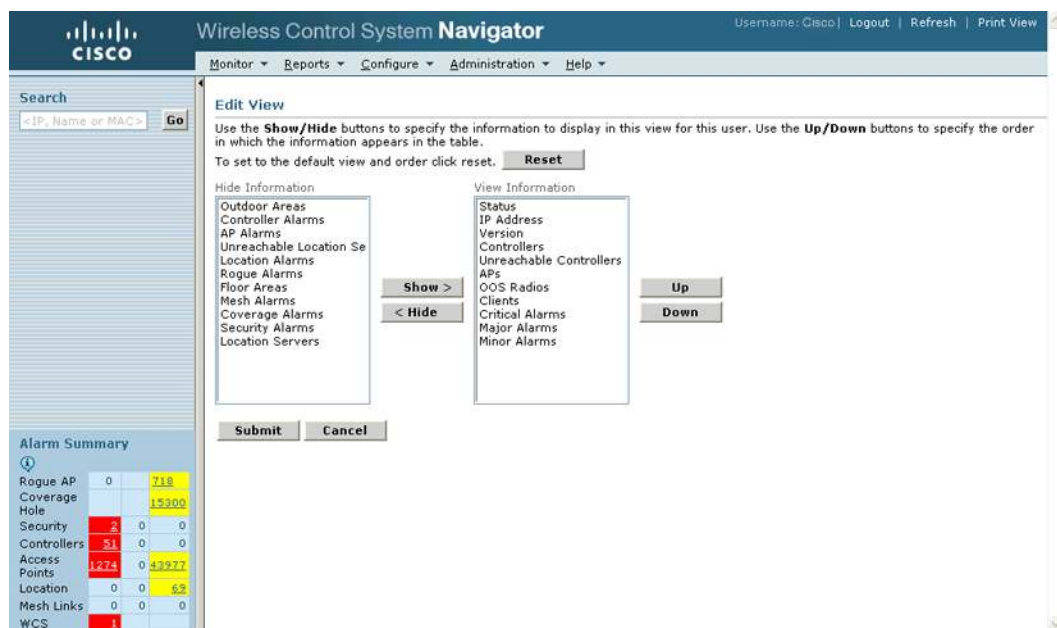
Figure 4. Adding New Cisco WCS Management Platforms



Advanced Ease of Use

Cisco WCS Navigator includes a robust, easy-to-use graphical interface that supports simplified management of multiple Cisco WCS management platforms. Users are automatically and transparently redirected to the corresponding Cisco WCS detail page when they select a search result or display a list item. The columns on individual list pages can be sorted and customized as needed (Figure 5). All Cisco WCS management platforms remain up-to-date with no hands-on intervention.

Figure 5. Customized Display Options



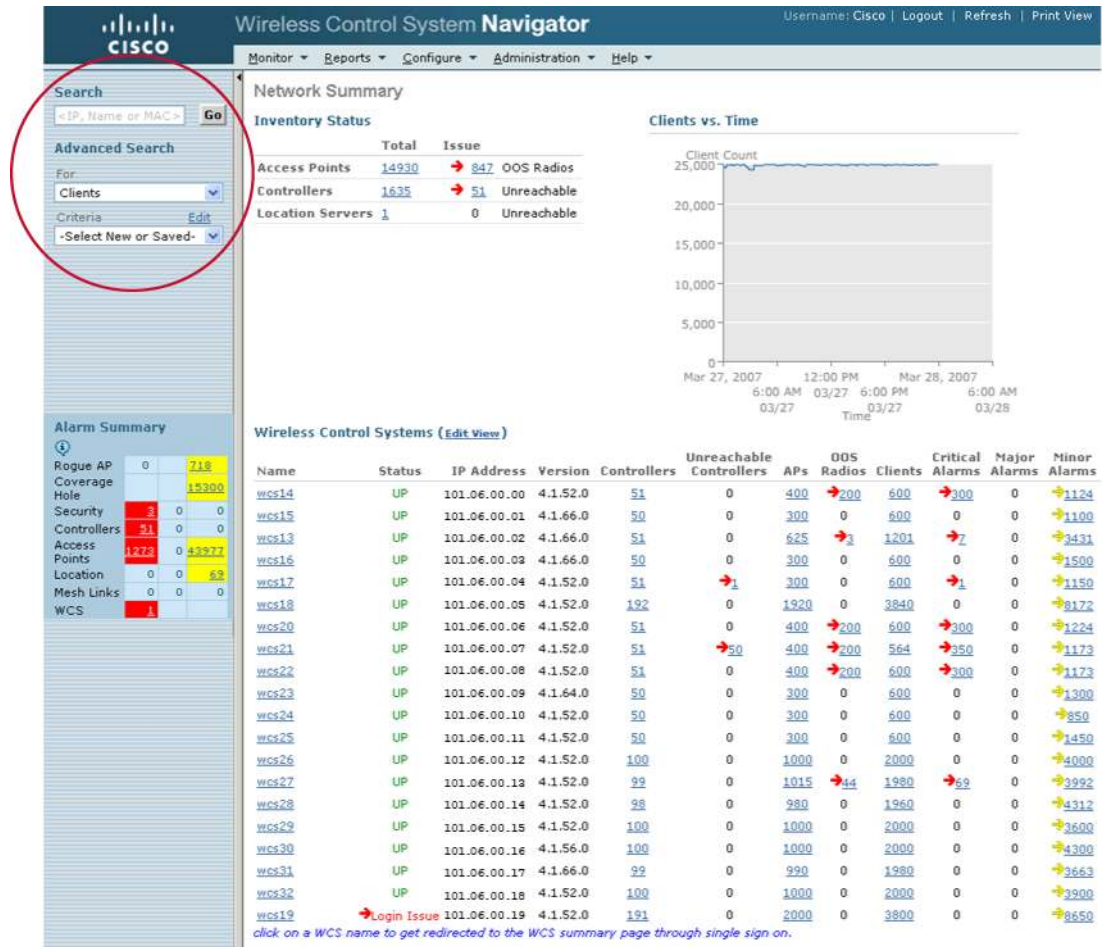
Virtual Domains

Cisco WCS Navigator supports partitioning of Cisco WCS platforms to restrict selected users to a single Cisco WCS platform or group of Cisco WCS platforms. This feature allows organizations and service providers to segment the wireless network at the Cisco WCS management platform to support access control based on a variety of criteria including geography, departments, and managed services customers.

Centralized and Quick Searches

Cisco WCS Navigator supports centralized and quick searches across all Cisco WCS management platforms (Figure 6). Centralized searches can be requested by client device, location (region, campus, or floor), access point, controllers, Wi-Fi tags, and rogue devices. Centralized searches can be saved if a search name is specified when the search is requested. Quick searches can be requested for devices by MAC address, IP address, or device name across all Cisco WCS management platforms.

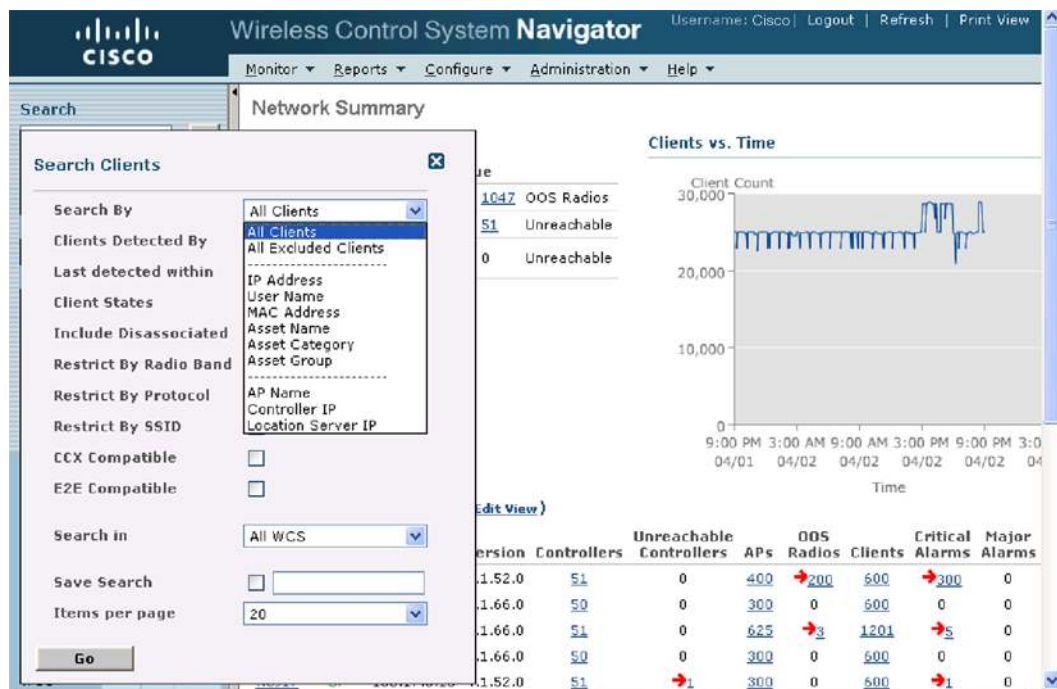
Figure 6. Centralized and Quick Searches



Location Tracking of Client and Rogue Devices

The location of individual clients, Wi-Fi tags and rogue devices can be determined by searching across the entire network. Searches can be requested by IP address, user name, MAC address, or asset name, category or group. Cisco WCS Navigator shows the location of the device on the network map of the Cisco WCS management platform where the device is located. (Figure 7)

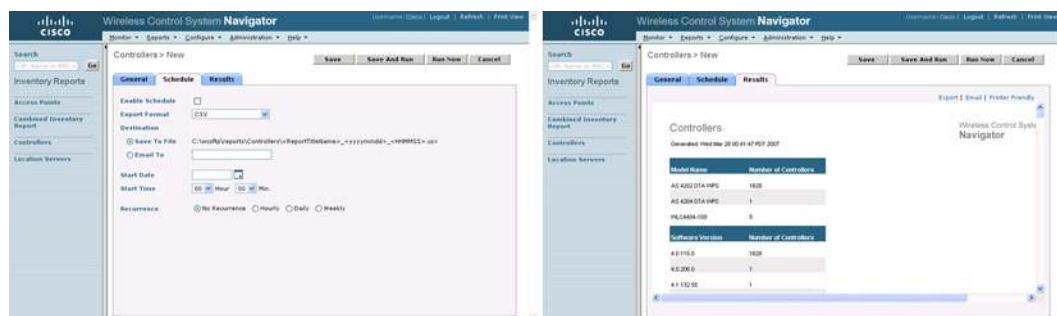
Figure 7. Location Tracking of Devices



Detailed Inventory Reports

Detailed inventory reports can be automatically generated by Cisco WCS Navigator. Hardware models and software version details about all Cisco Aironet lightweight access points, Cisco wireless LAN controllers, and Cisco Wireless Location Appliances can be exported on demand or on an automated schedule. Reports can be customized by file format, directory, type, and interval (Figure 8).

Figure 8. Detailed Inventory Reports



Licensing

Cisco WCS Navigator is available as a software license to support 20 Cisco WCS management platforms. A Cisco WCS Navigator license can be ordered from the [Cisco Ordering Tool](#).

Please read the [Cisco WCS Navigator Licensing and Ordering Guide](#) for step-by-step instructions for ordering the correct Cisco WCS Navigator license SKU as well as instructions for downloading, installing, and registering Cisco WCS Navigator software.

Cisco WCS Navigator Demonstration License

Cisco WCS Navigator is also available as a 30 day demonstration license. The Cisco WCS Navigator demonstration license supports up to five Cisco WCS management platforms. The Cisco WCS Navigator demonstration license can be requested from

<http://www.cisco.com/go/license> or

<https://tools.cisco.com/SWIFT/Licensing/PrivateRegistrationServlet?DemoKeys=Y>. Select Network Mgmt Products > Wireless Control System Navigator > Wireless Control System Navigator 30 day trial license. Then after receiving the license email, download Cisco WCS software from http://www.cisco.com/cgi-bin/tablebuild.pl/Wireless_Control_System_Navigator_Software.

Features and Benefits

Table 1 lists the features and benefits of Cisco WCS Navigator.

Table 1. Features and Benefits of Cisco WCS Navigator

Feature	Benefit
Intuitive GUI	IT staff can easily configure and monitor multiple Cisco WCS management platforms with minimal training.
Network monitoring	The operational status (up or down) of each individual Cisco WCS management platform is monitored. Configurable alarms can be initiated when it is detected that a connected Cisco WCS is nonoperational.
Network summary screen	A network summary screen displays outstanding alarms, fault summaries, client counts, and status counts of all connected Cisco WCS management platforms, including connected lightweight access points, wireless LAN controllers, location appliances, and clients.
Secure single sign-on	Access privileges for all Cisco WCS management platforms are supported through Cisco WCS Navigator secure single sign-on. Individual user IDs do not need to be created on each Cisco WCS management platform.
TACACS+ support	TACACS+ is used to authenticate and authorize access to all Cisco WCS management platforms.
Scalability	Up to 20 Cisco WCS management platforms with manageability of up to 30,000 access points can be supported from a single Cisco WCS Navigator management console.
Virtual Domains	Organizations and service providers can segment the wireless network at the Cisco WCS management platform to support access control based on a variety of criteria including geography, departments, and managed services customers.
Automated browser redirect	IT staff is automatically redirected to the corresponding Cisco WCS management platform detail page when they select a search result or display item.
Centralized and quick searches	Centralized searches can be issued by client device, location (region, campus, or floor), access point, controllers, Wi-Fi tags, and rogue devices. Quick searches can be requested by MAC address, IP address, or device name across all Cisco WCS management platforms.
Location tracking of client, Wi-Fi tags and rogue devices	The location of individual clients, Wi-Fi tags and rogue devices can be determined across the entire network. The location of the device is displayed on the network map of the Cisco WCS management platform where the device is located.
Simplified setup and configuration	New Cisco WCS management platforms are easily added by specifying the username and password for each Cisco WCS management platform.
Indoor and outdoor network management	Indoor and outdoor wireless LANs (WLANs) can be cost-effectively viewed from a single management console.
Detailed inventory reports	Detailed inventory reports can be automatically generated and scheduled and then sent by email or exported to a CSV file.

Summary

Cisco WCS Navigator is ideal for large-scale enterprise WLAN deployments with multiple, geographically diverse Cisco WCS management platforms. It delivers an innovative solution for enhanced scalability, manageability, and visibility of large-scale implementations of the Cisco Unified Wireless Network. Cisco WCS Navigator offers network administrators a cost-effective solution for viewing indoor and outdoor WLANs from a single management console. It is easy to

use and provides reliable visibility of all Cisco WCS management platforms, including connected Cisco Aironet lightweight access points, Cisco wireless LAN controllers, Cisco Wireless Location Appliances, and authorized and unauthorized 802.11 devices.

Product Specifications

Table 2 lists the product specifications for Cisco WCS Navigator.

Table 2. Product Specifications for Cisco WCS Navigator

Item	Specification
Minimum server requirements	<ul style="list-style-type: none"> Windows 2003 SP1 or greater, or Redhat Linux AS/ES v4.0 High-End Server: Intel® Xeon Quad CPU; 3.15 GHz, 8-GB RAM, and 200-GB HDD
Minimum client requirements	Internet Explorer 6.0 with SP1 or later
Software release requirements	Cisco WCS management platforms must be running Cisco Unified Wireless Network Software Release 4.1 or later to interface with Cisco WCS Navigator
Management	SNMP v1, v2c, and v3
Managed devices	Up to 20 Cisco WCS management platforms with manageability of up to 30,000 Cisco Aironet lightweight access points
Database	Integrated Solid FlowEngine Structured Query Language (SQL)

Ordering Information

Table 3 provides ordering information for Cisco WCS Navigator. To place an order for a Cisco WCS Navigator license, visit the [Cisco Ordering Website](#).

Customers can download Cisco Unified Wireless Network Software Release 4.1 from http://www.cisco.com/cgi-bin/tablebuild.pl/Wireless_Control_System_Navigator_Software (login required) or from the [Product Upgrade Tool](#).

Cisco WCS Navigator is only available with Cisco Unified Wireless Network Software Release 4.1 and later. All Cisco WCS management platforms connecting to Cisco WCS Navigator must be running Cisco Unified Wireless Network Software Release 4.1 or later.

A Cisco WCS Navigator license is included for free with the purchase of Cisco WCS enterprise licenses for 10,000 and 50,000 lightweight access points.

Please read the [Cisco WCS Navigator Licensing and Ordering Guide](#) for step-by-step instructions for ordering the correct Cisco WCS Navigator license SKU as well as instructions for downloading, installing, and registering Cisco WCS Navigator software.

Table 3. Ordering Information for Cisco WCS

Product Part Number	Product Description
WCS-NAV-20	Cisco WCS Navigator License to support 20 Cisco WCS management platforms

Service and Support

Cisco offers a wide range of services programs to accelerate customer success. These innovative services programs are delivered through a unique combination of people, processes, tools, and partners, resulting in high levels of customer satisfaction. Cisco services help you protect your network investment, optimize network operations, and prepare your network for new applications to extend network intelligence and the power of your business. For more information about Cisco services, visit [Cisco Technical Support Services](#) or [Cisco Advanced Services](#).

For More Information

For more information about the Cisco Unified Wireless Network, visit:

<http://www.cisco.com/go/unifiedwireless>



Americas Headquarters
Cisco Systems, Inc.
San Jose, CA

Asia Pacific Headquarters
Cisco Systems (USA) Pte. Ltd.
Singapore

Europe Headquarters
Cisco Systems International BV
Amsterdam, The Netherlands

Cisco has more than 200 offices worldwide. Addresses, phone numbers, and fax numbers are listed on the Cisco Website at www.cisco.com/go/offices.

CCDE, CCVP, Cisco, Cisco StadiumField, the Cisco logo, CPE, and Welcome to the Human Network are trademarks; Changing the Way We Work, Live, Play and Learn is a service mark; and Access Registrar, Altran, AsyncOS, Bringing the Meeting To You, Catalyst, CCDA, CCDP, CCIE, CCIP, CCNA, CCNP, CCSF, Cisco, the Cisco Certified Internetwork Expert logo, Cisco IOS, Cisco Press, Cisco Systems, Cisco Systems Capital, the Cisco Systems logo, Cisco Unity, Collaboration Without Limitation, Enterprise/Solver, EtherChannel, EtherFast, EtherSwitch, Event Center, Fast Step, Follow Me Browsing, FormShare, GigaDrive, HomeLink, Internet Quotient, IOS IPbase, IP/TV, IQ Expertise, the IQ logo, IQ Net Readiness Scorecard, iQuickStudy, IronPort, the IronPort logo, LightStream, Linksys, MediaTone, MeetingPlace, MIM, NetWork, Networking Academy, Network Registrar, PCNow, PIX, PowerPanels, ProConnect, ScriptShare, SenderBase, SMARTnet, Spectrum Expert, StackWise, The Fastest Way to Increase Your Internet Quotient, TransPath, WebEx, and the WebEx logo are registered trademarks of Cisco Systems, Inc. and/or its affiliates in the United States and certain other countries.

All other trademarks mentioned in this document or Website are the property of their respective owners. The use of the word partner does not imply a partnership relationship between Cisco and any other company. ©2008